

# 令和6年能登半島地震における 木造建物と地盤の被害調査

2024年3月9日・8日実施

多幾山 法子(東京都立大学・准教授)

陳 昕岩(アルキテック)

扇野智弘(日本設計)

姜 昊(東京都立大学・大学院生)

木造建物悉皆調査のデータは割愛し、別途、北陸支部および木質構造拡大災害WGへ提出する

# 行程 1

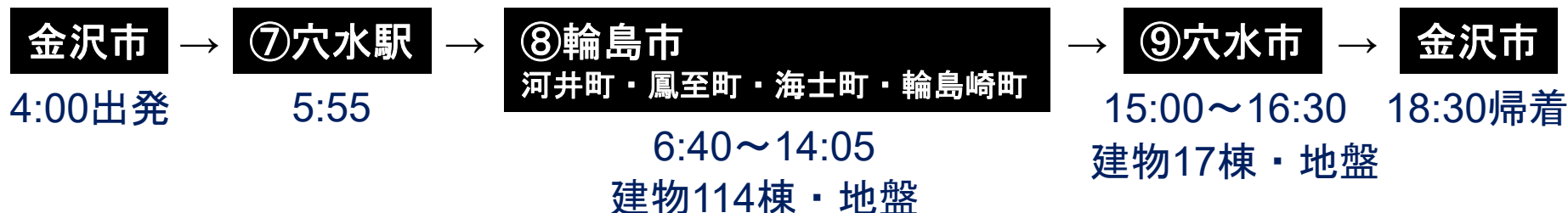
2024年3月9日 (天候：強風・くもり時々雪)

調査者：多幾山・陳・扇野・姜



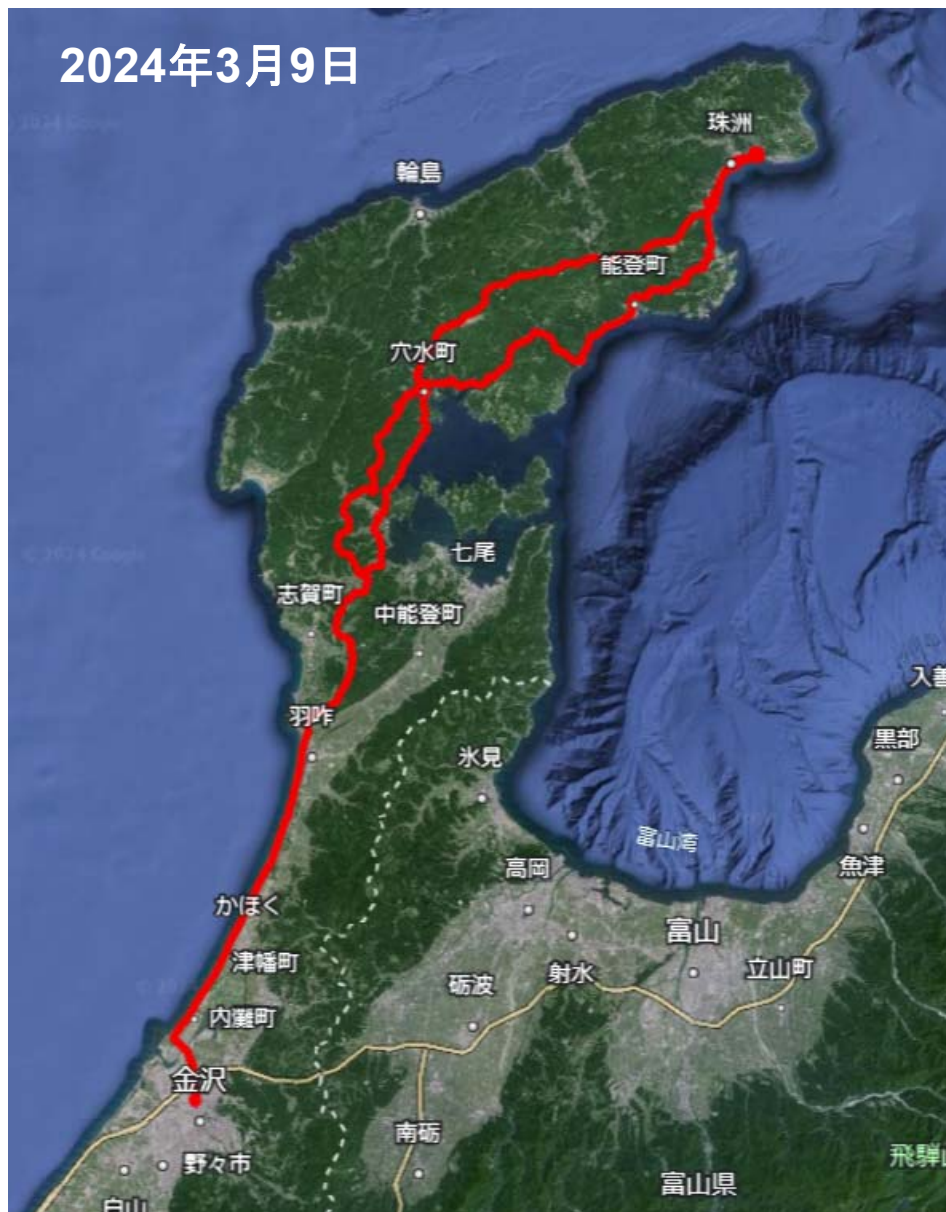
2024年3月10日 (天候：晴・一時雪)

調査者：多幾山・陳・扇野

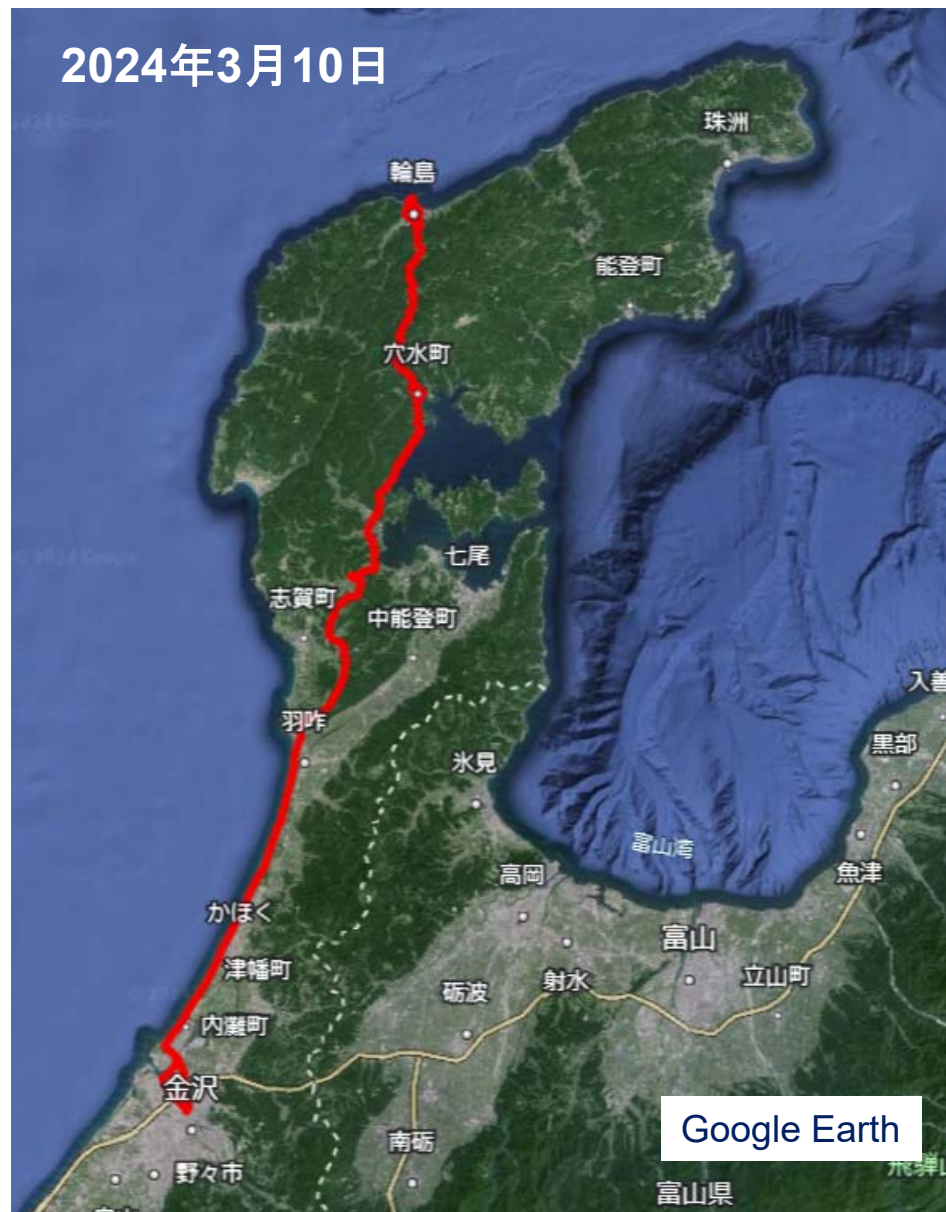


# 行程2

2024年3月9日

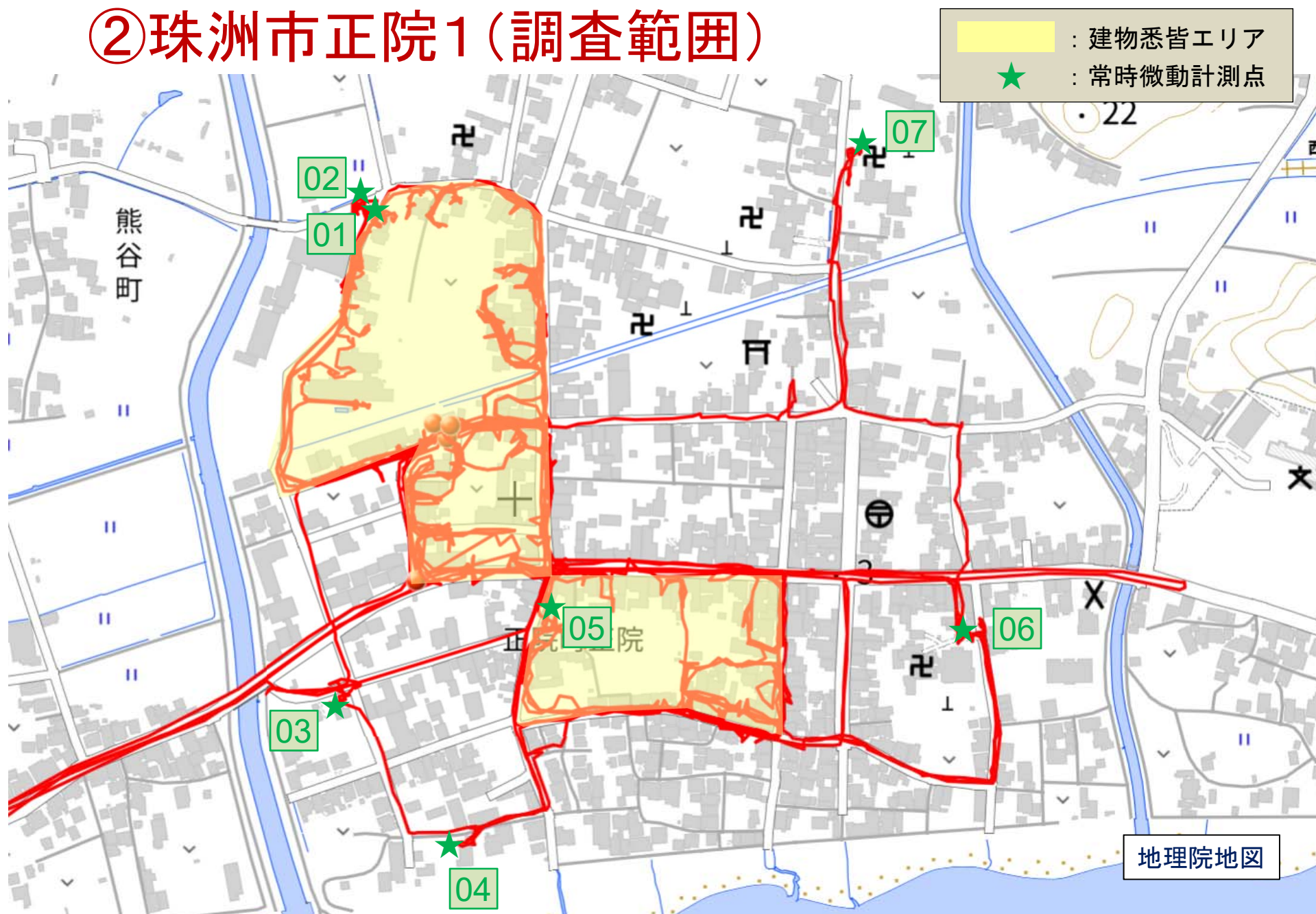


2024年3月10日



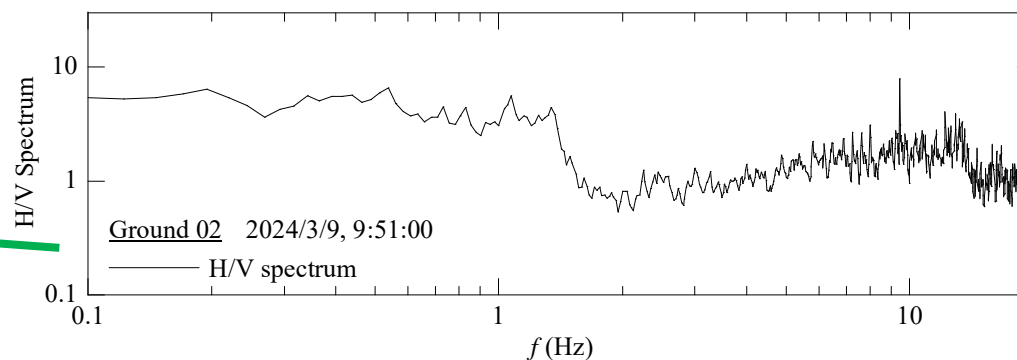
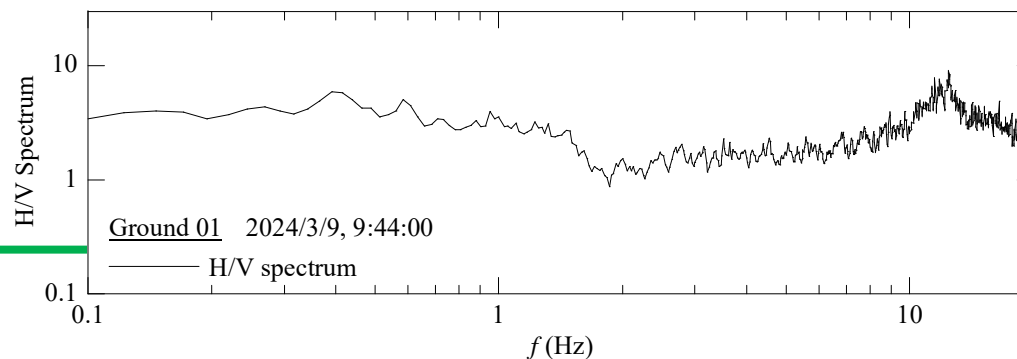
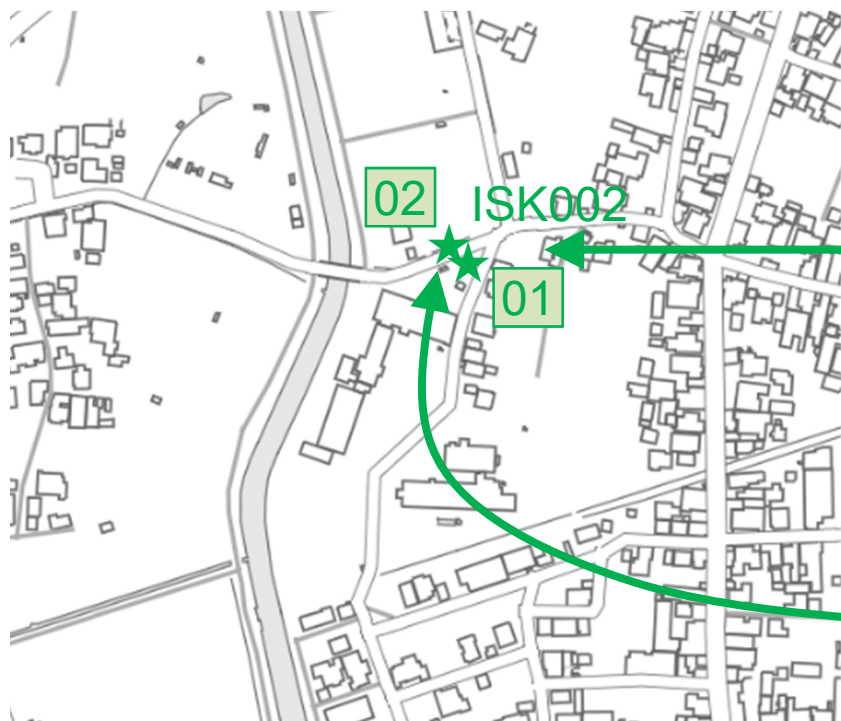


## ② 珠洲市正院1 (調査範囲)



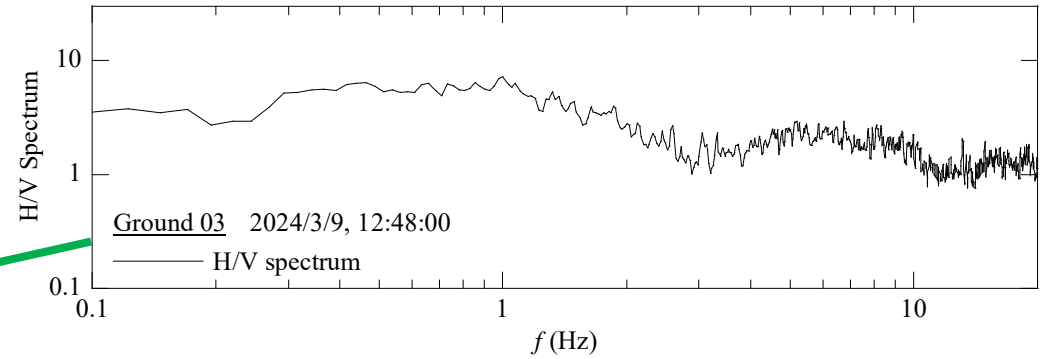


## ②珠洲市正院2 (計測点01・02 / ISK002)



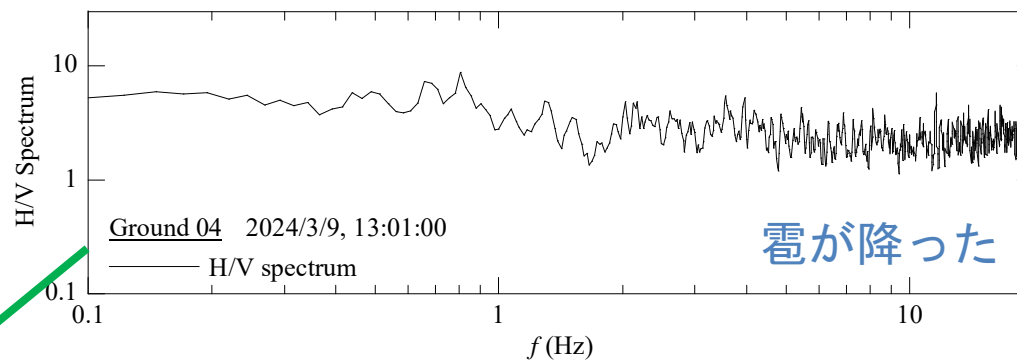


## ②珠洲市正院3 (計測点03)



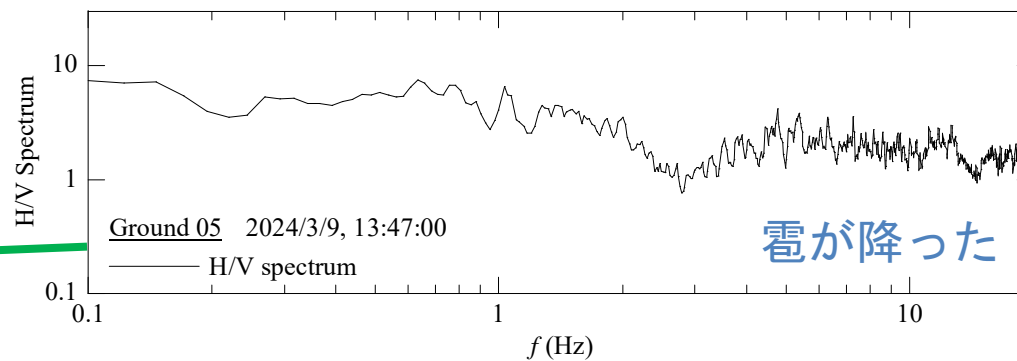


## ②珠洲市正院4 (計測点04)



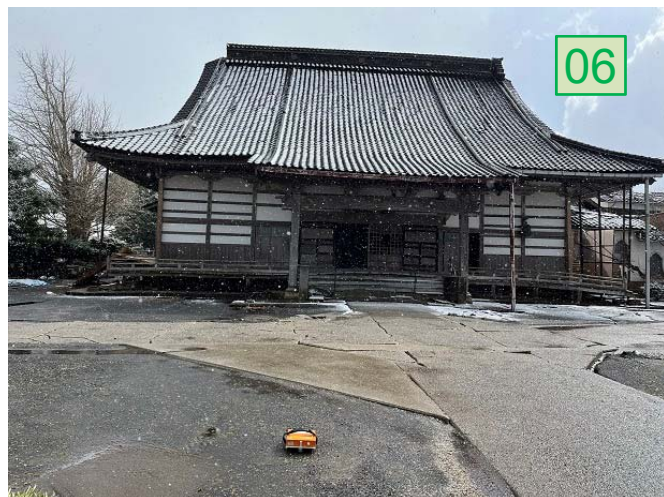
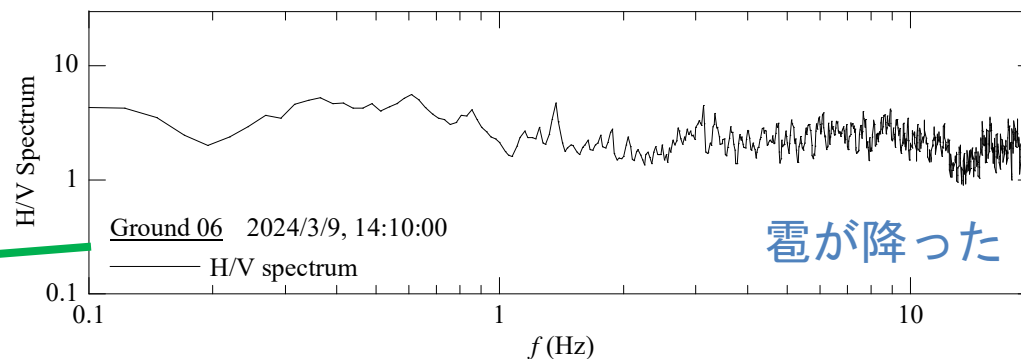


## ②珠洲市正院5 (計測点05)



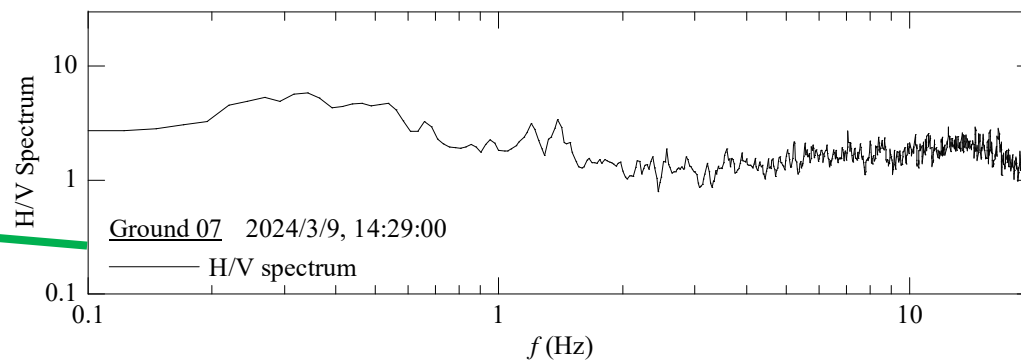
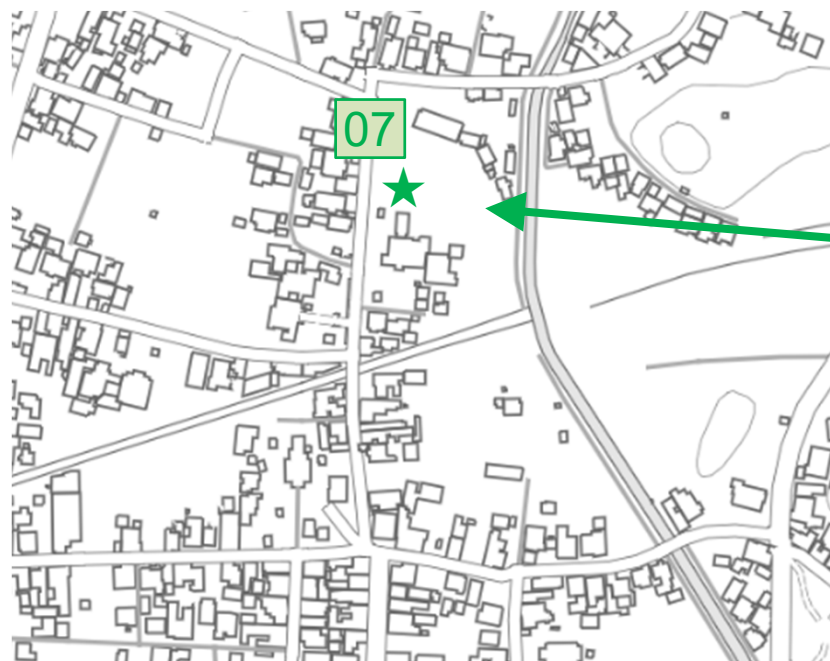


## ②珠洲市正院6 (計測点06)



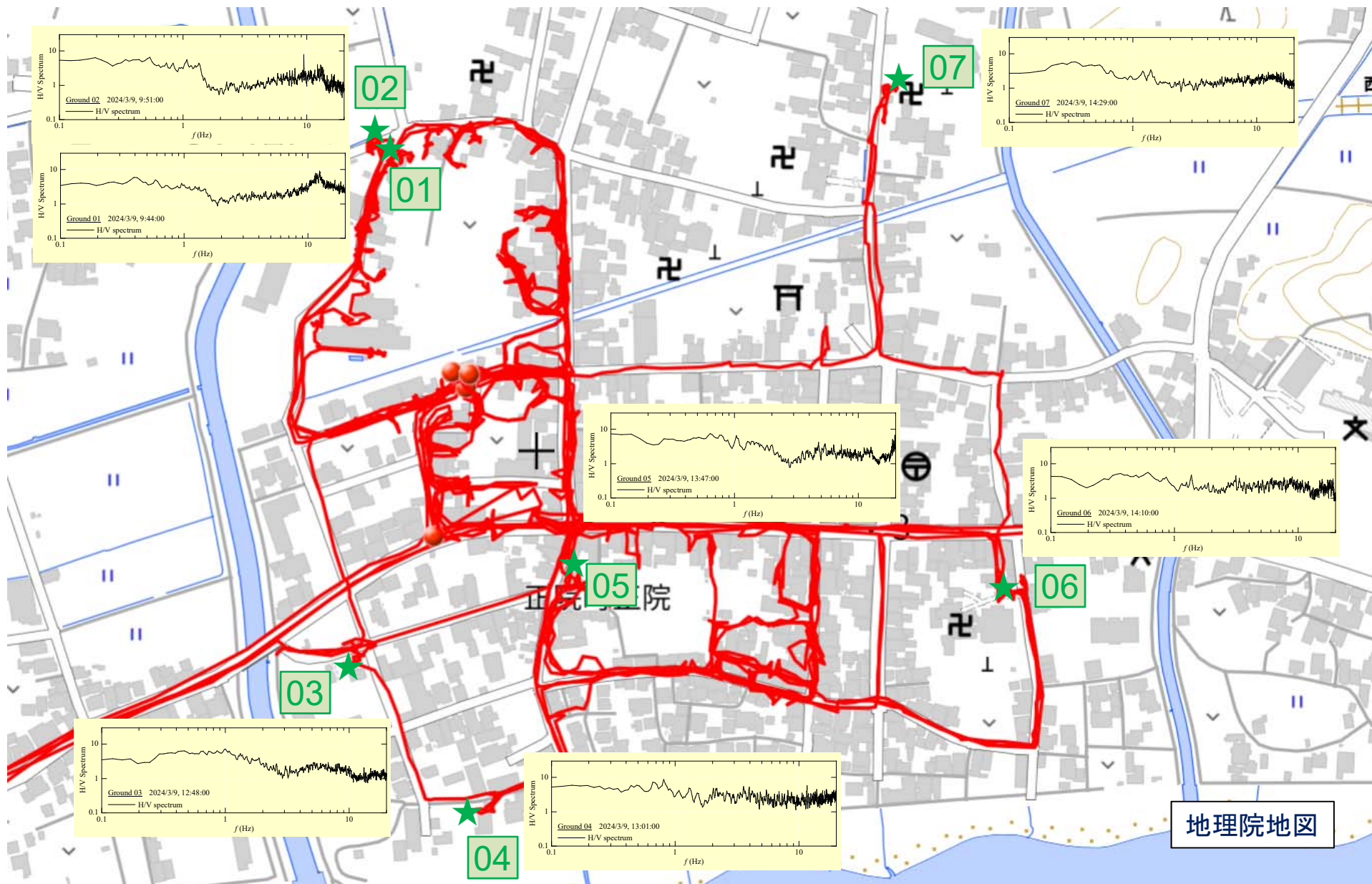


## ②珠洲市正院7(計測点07)

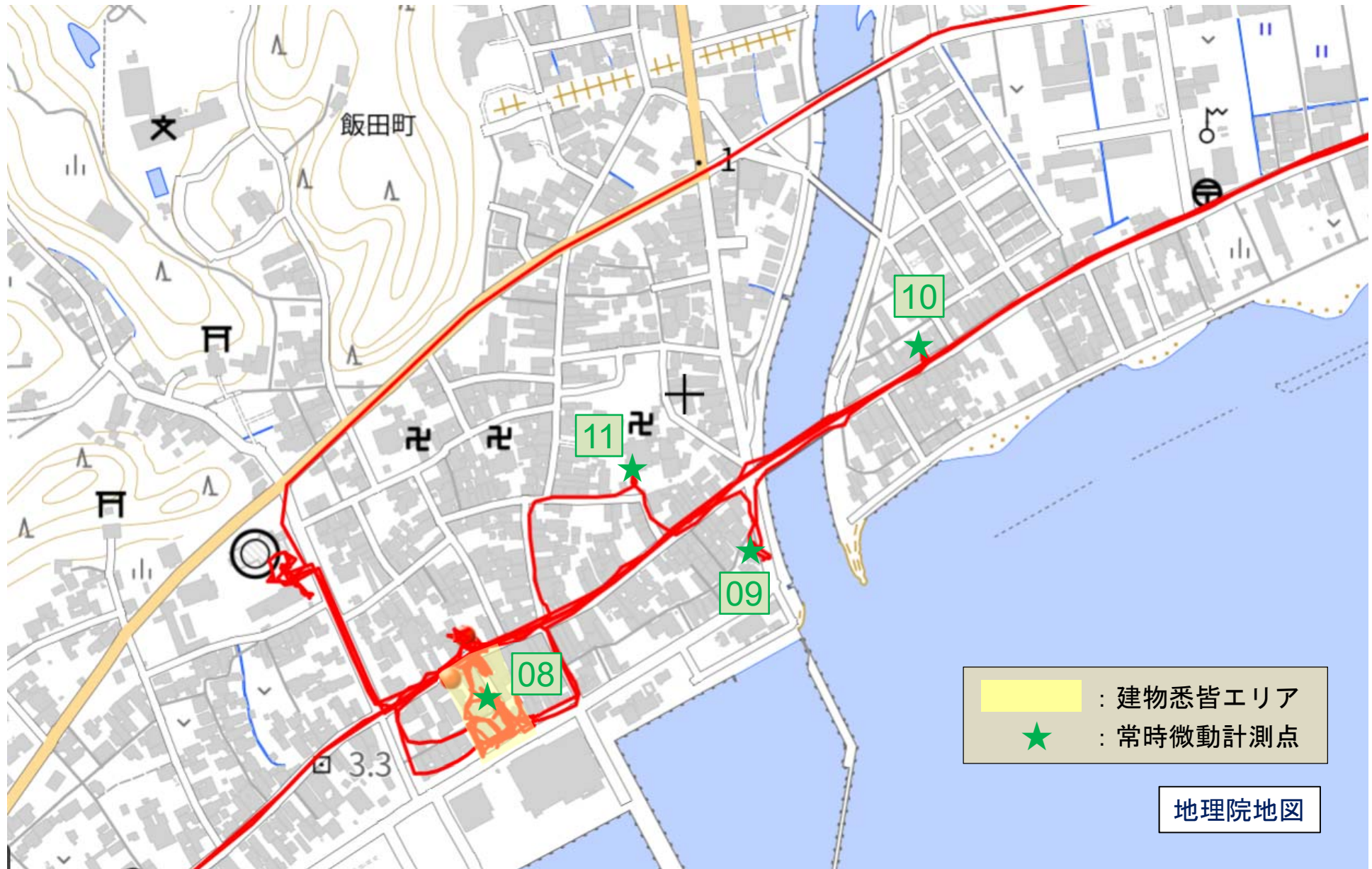




## ② 珠洲市正院8 (H/Vスペクトルまとめ)

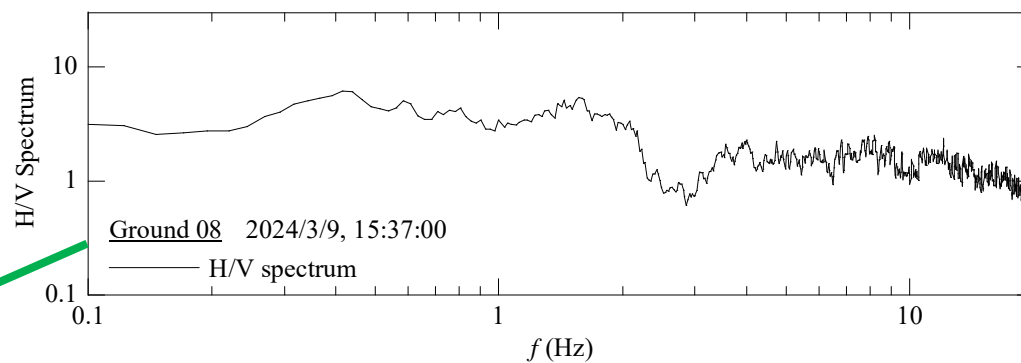


### ③ 珠洲市飯田1 (調査範囲)



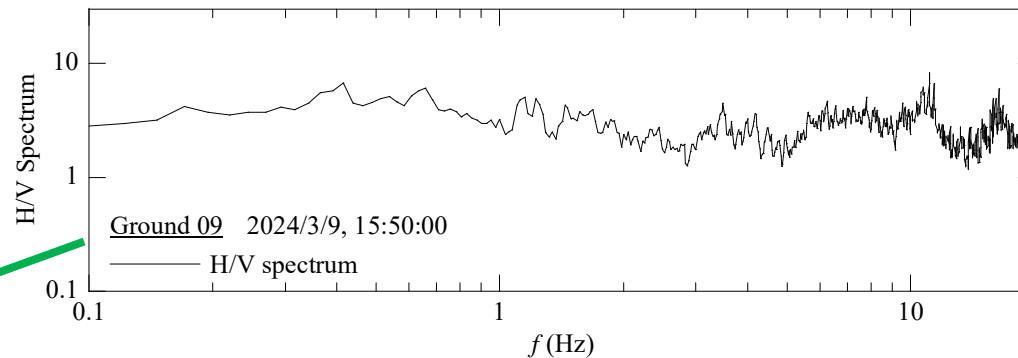
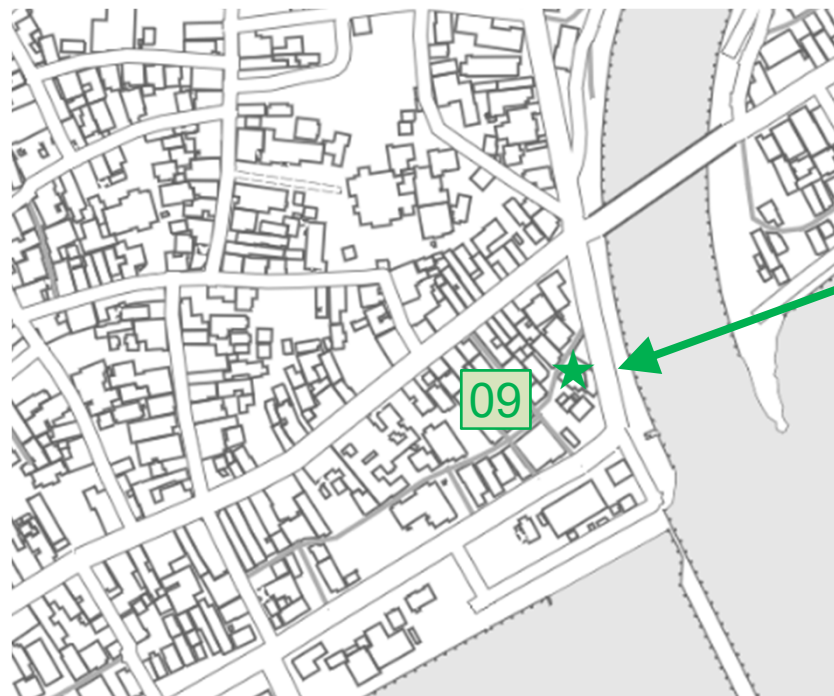


### ③ 珠洲市飯田2 (計測点08)



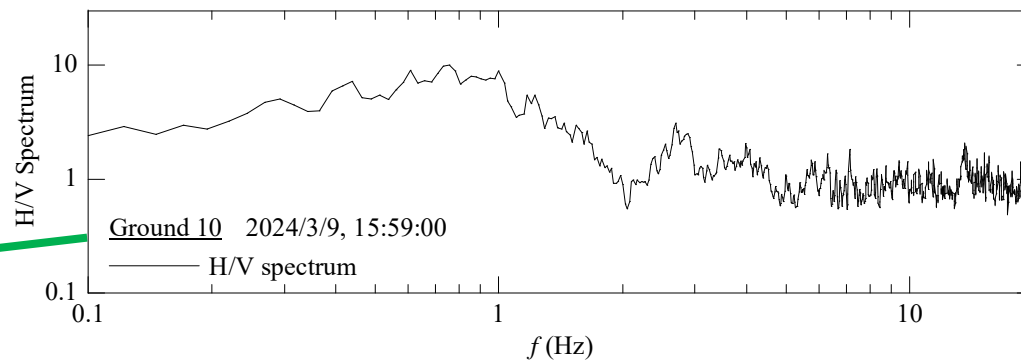
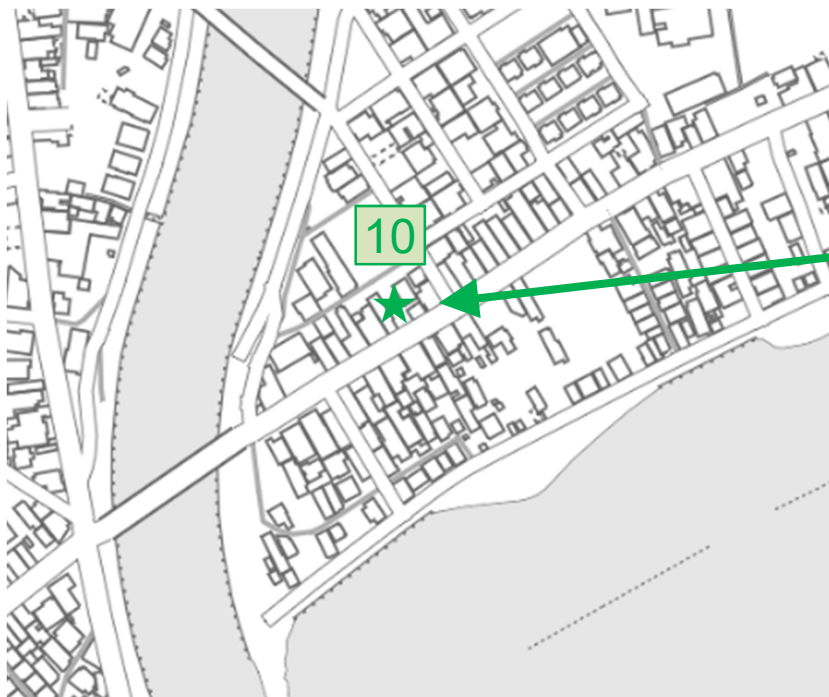


### ③ 珠洲市飯田3 (計測点09)



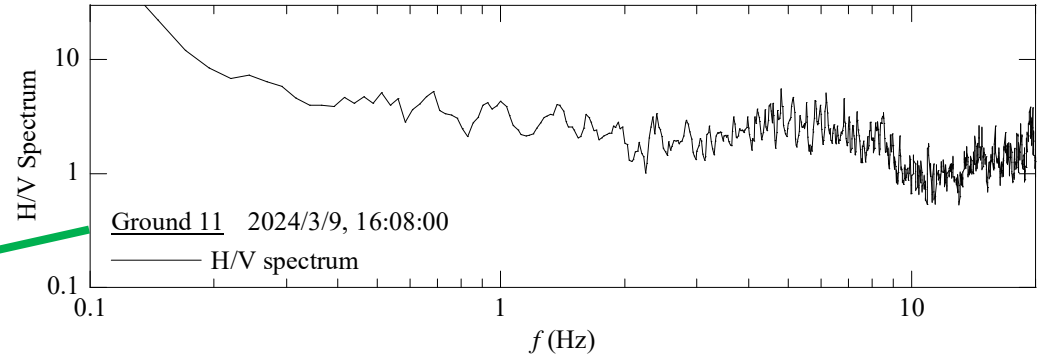
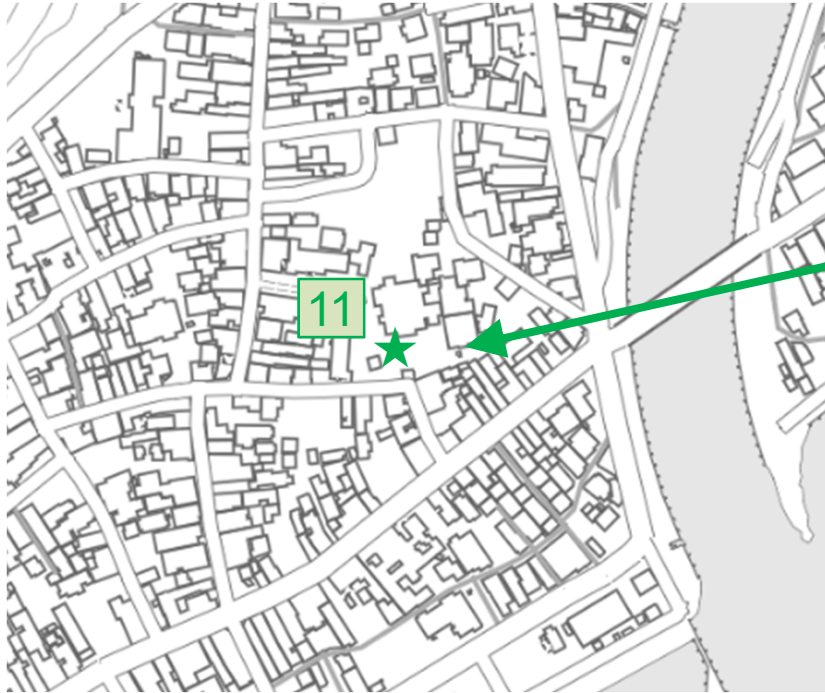


### ③ 珠洲市飯田4 (計測点10)



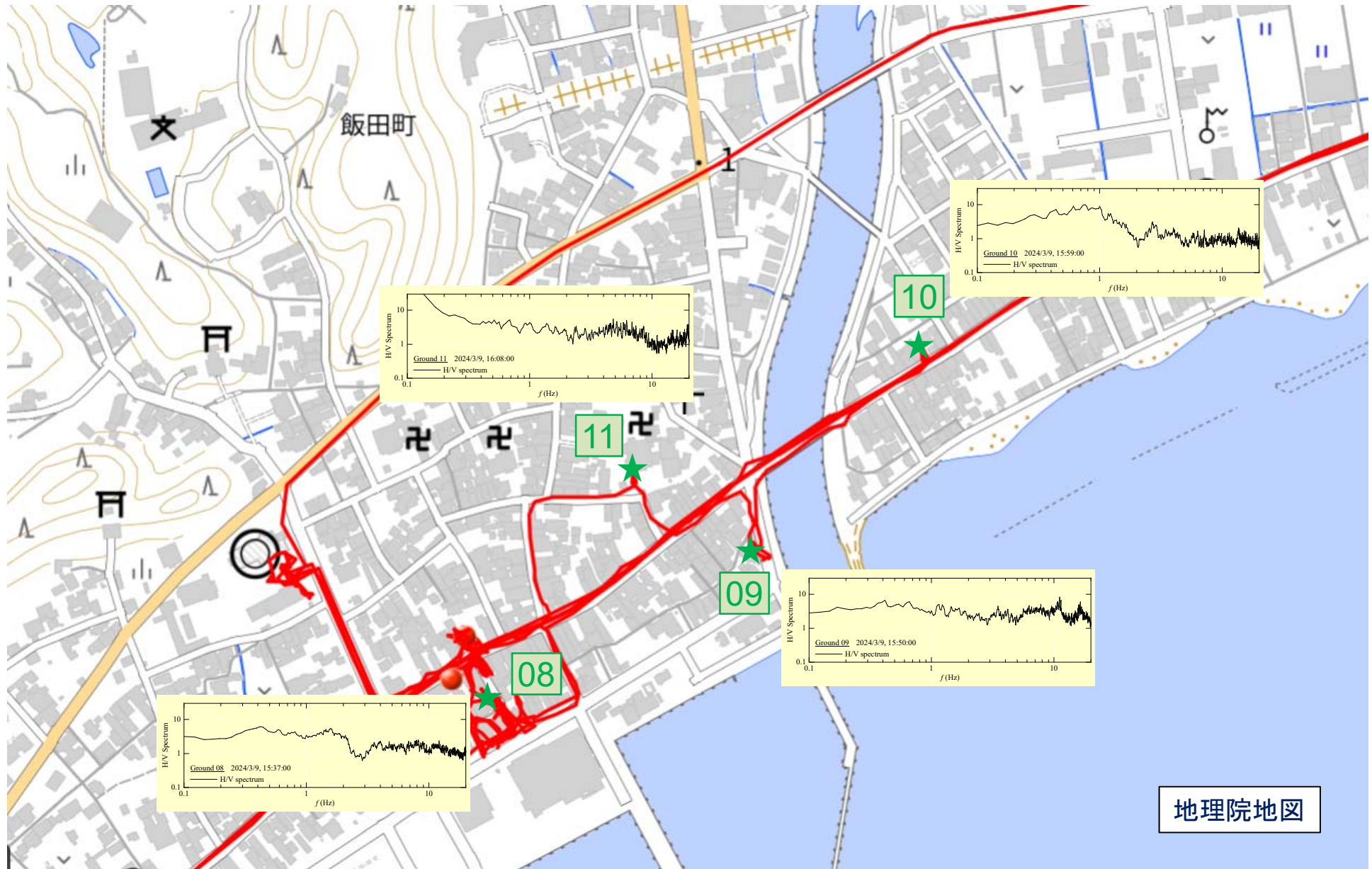


### ③ 珠洲市飯田5 (計測点11)



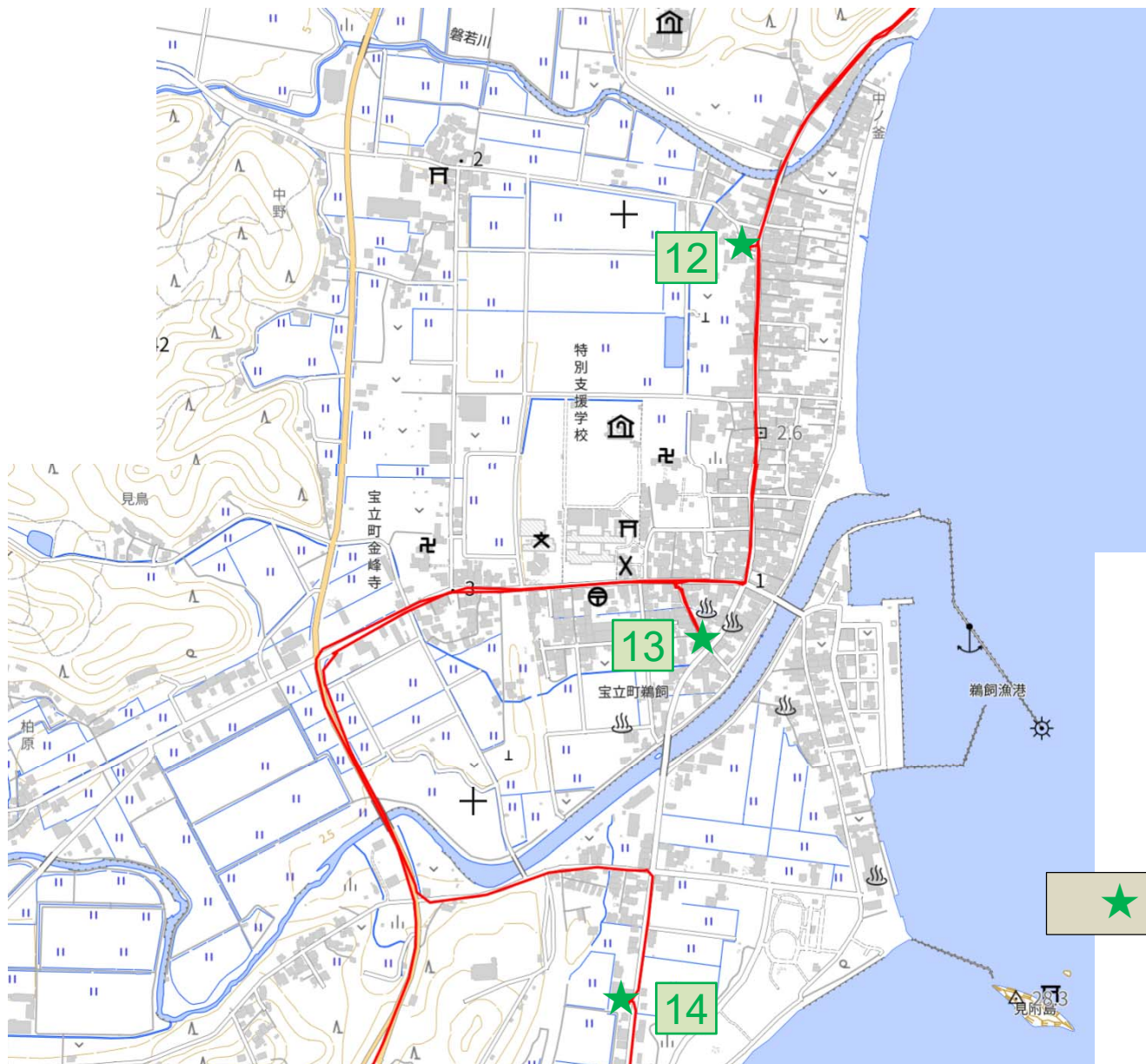


### ③ 珠洲市飯田6 (H/Vスペクトルまとめ)





# ④ 珠洲市宝立1 (調査範囲)

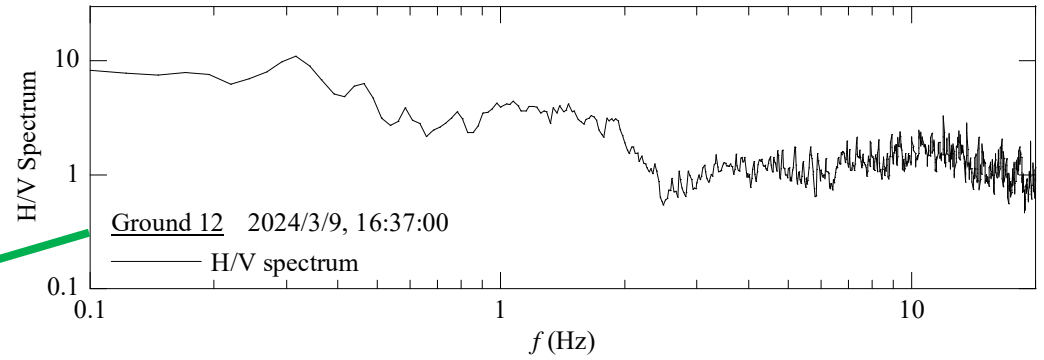


★ : 常時微動計測点

地理院地図

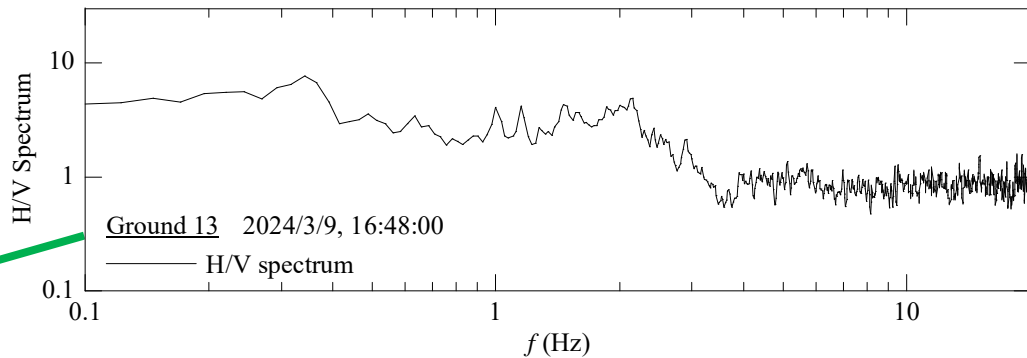
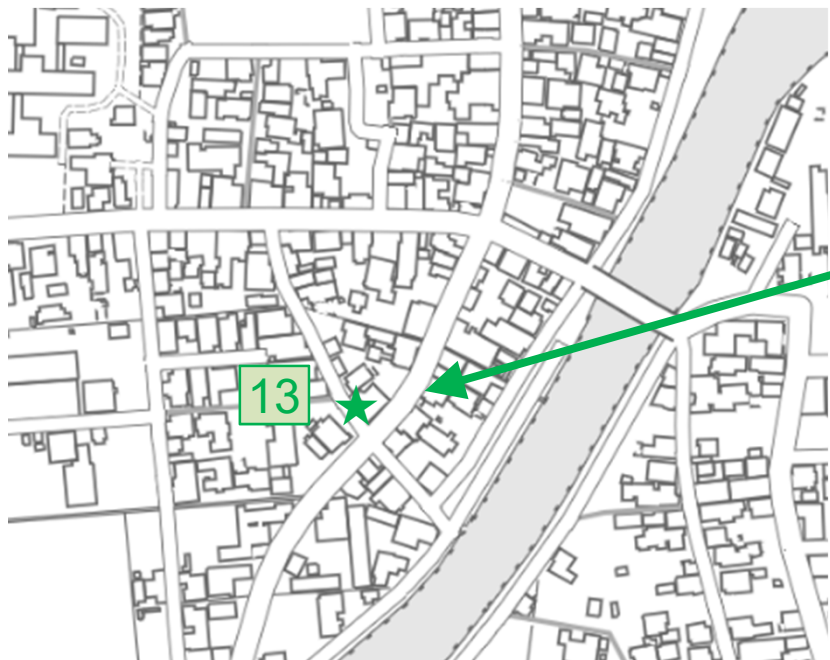


# ④ 珠洲市宝立2 (計測点12)



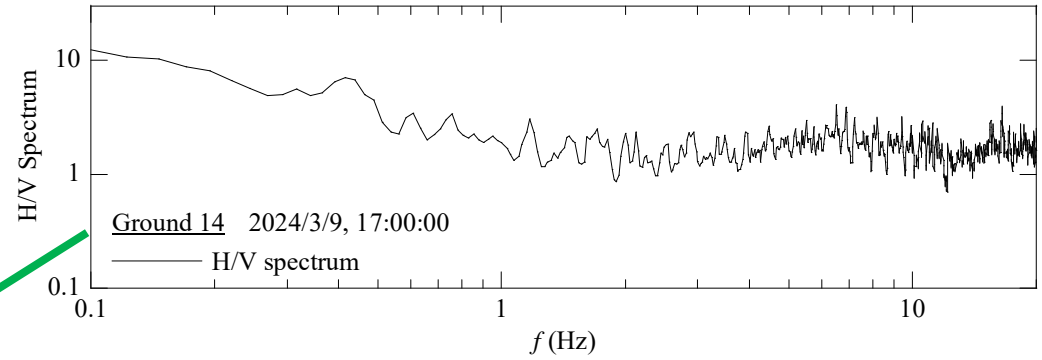


# ④ 珠洲市宝立3 (計測点13)





# ④ 珠洲市宝立4 (計測点14)



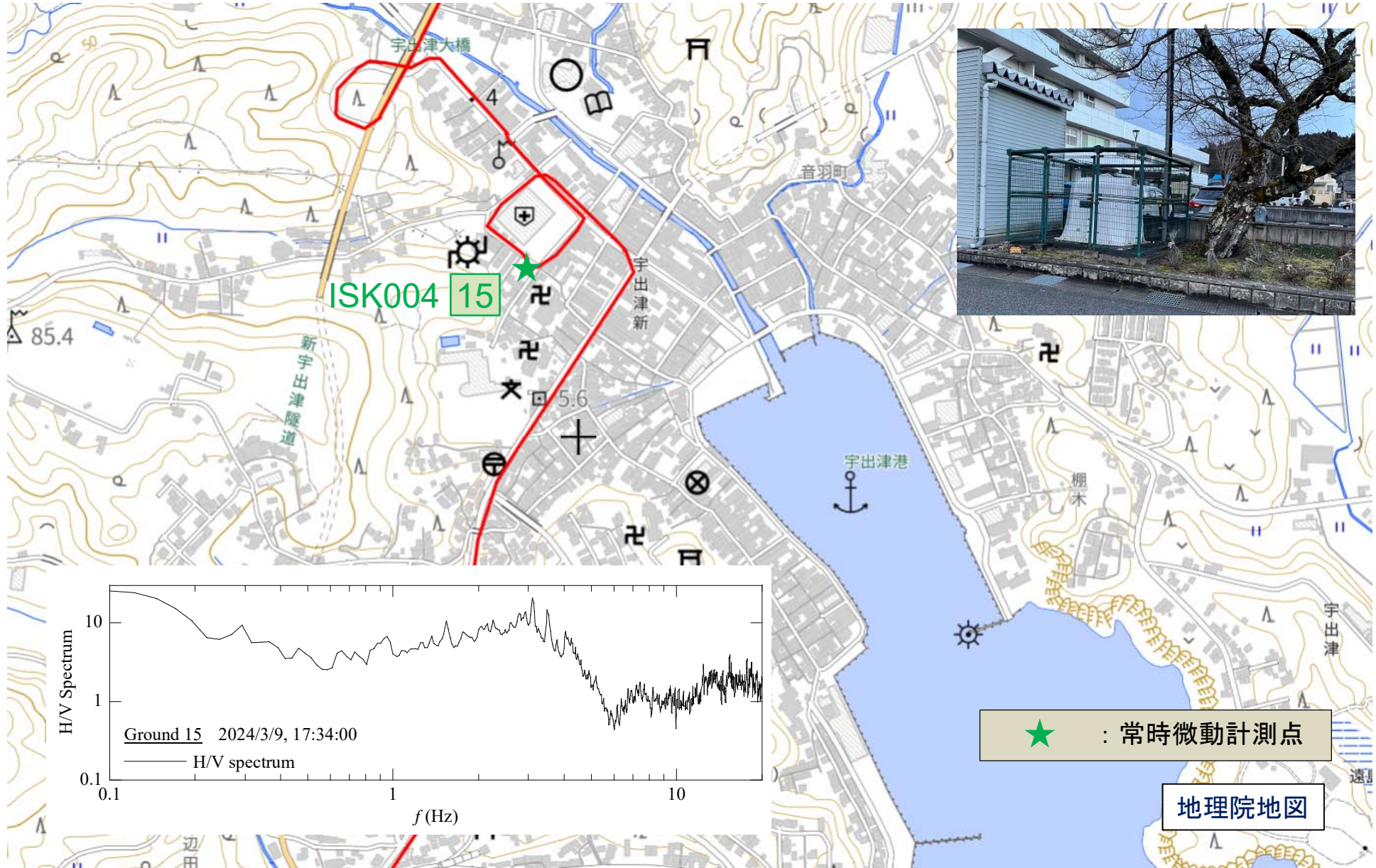


# ④ 珠洲市宝立5 (H/Vスペクトルまとめ)



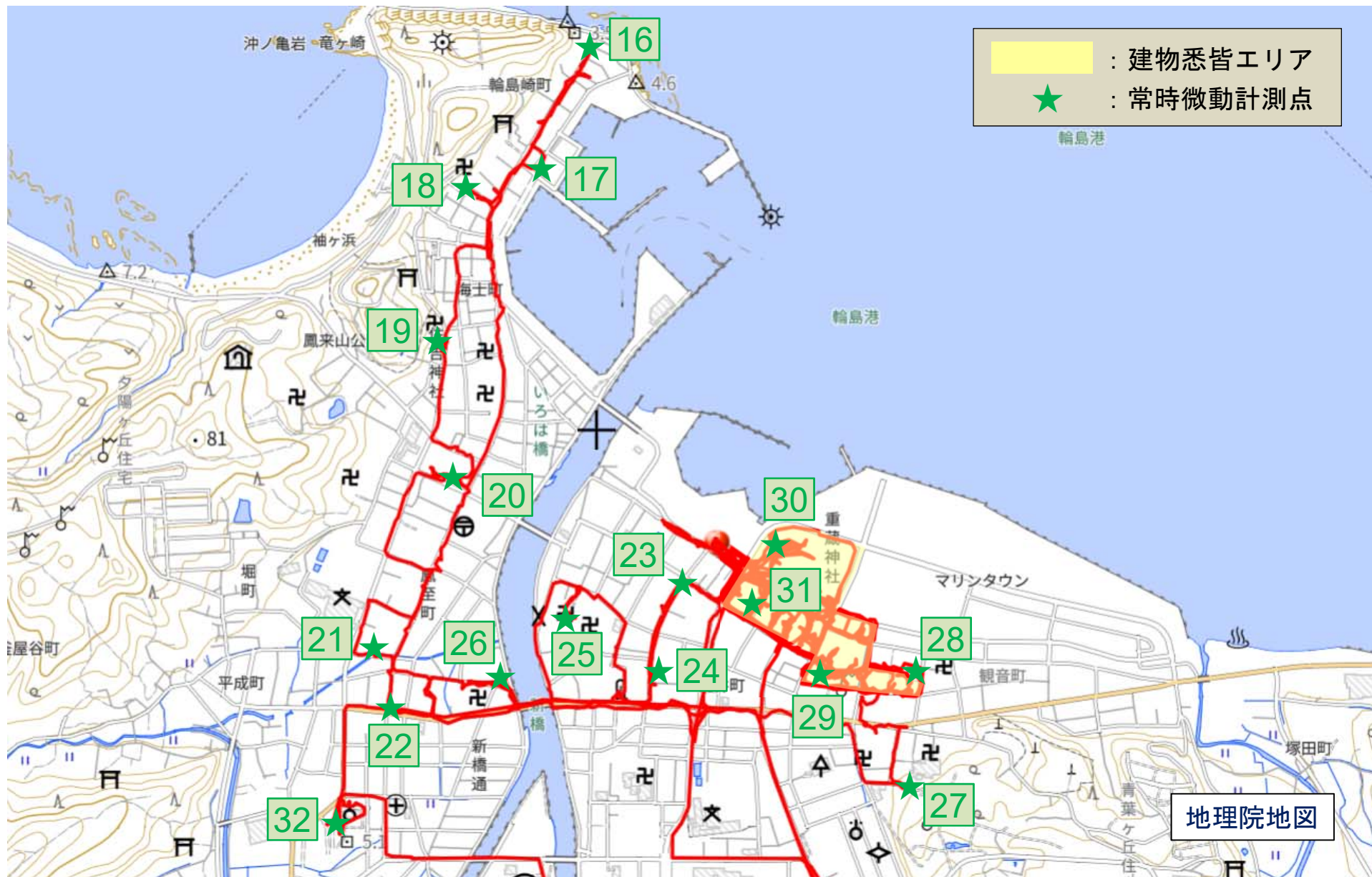


# ⑤能登町(計測点15/ISK004)



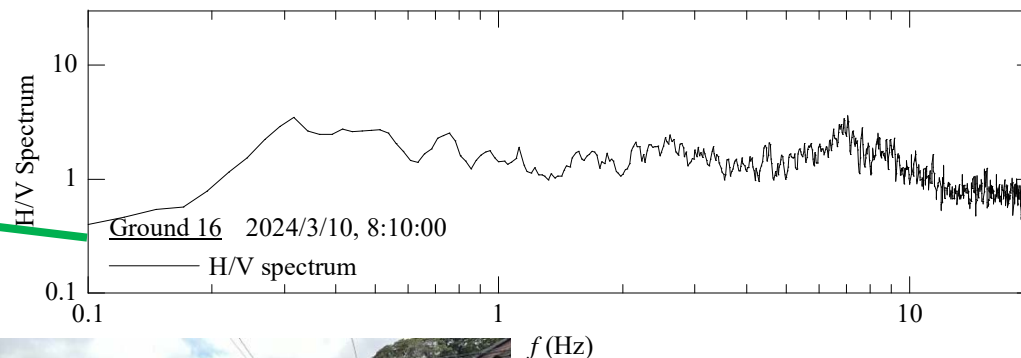
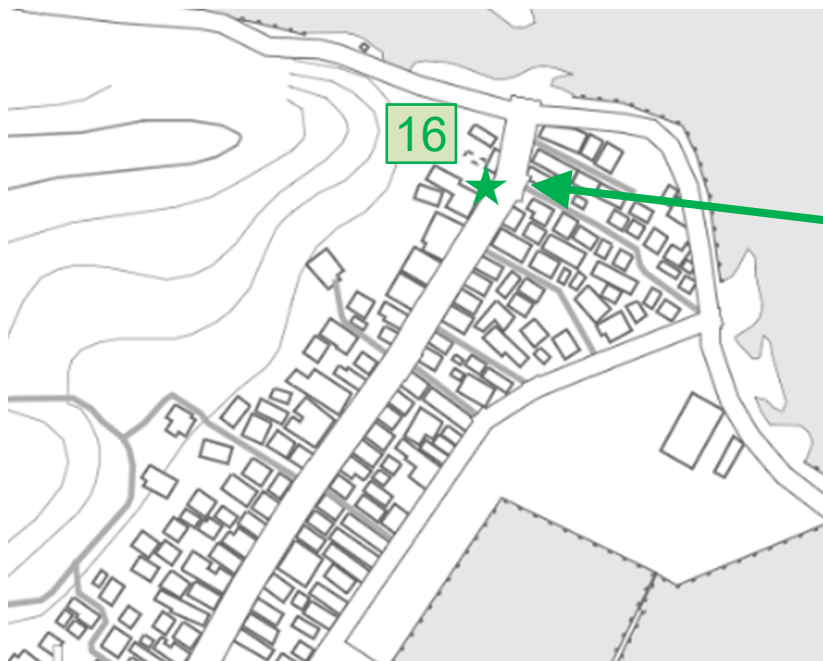


# ⑧輪島市1 (河井町・鳳至町・海士町・輪島崎町) (調査範囲)



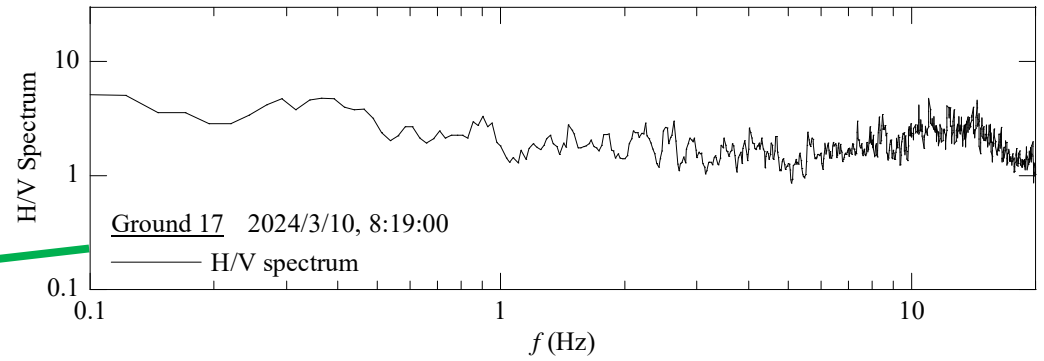
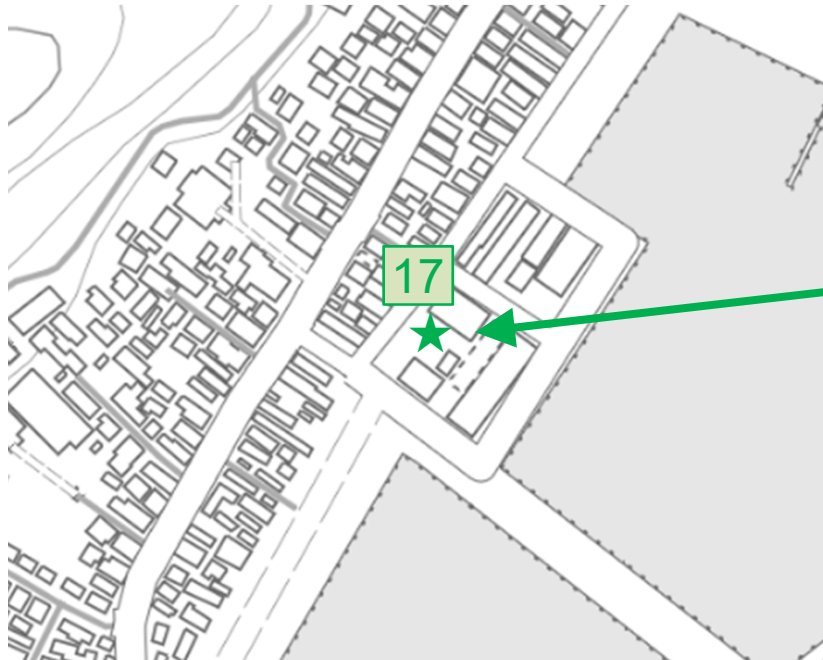


# ⑧輪島市2(計測点16)



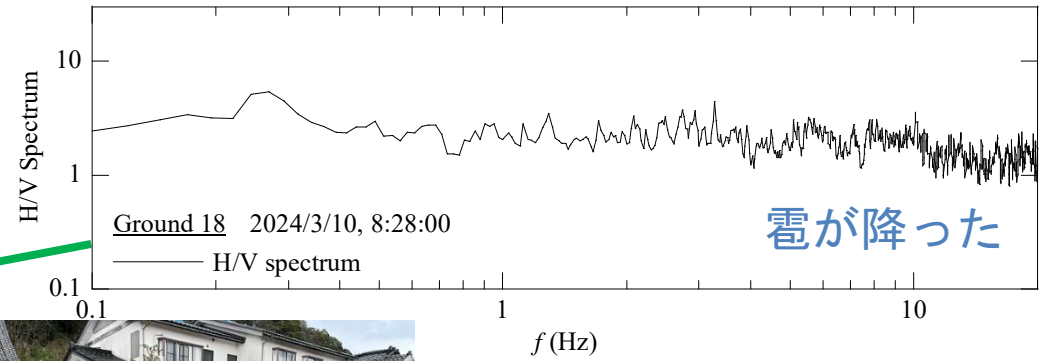
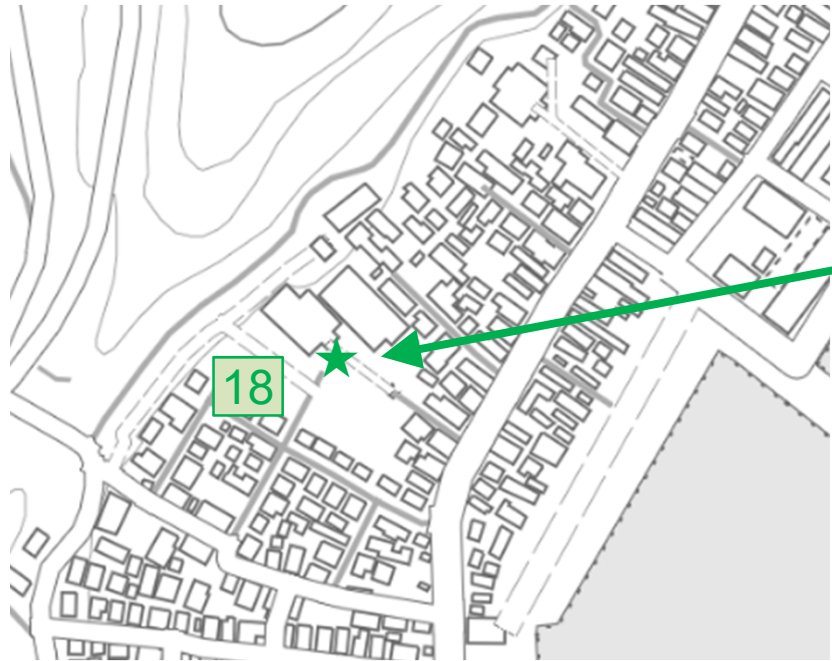


# ⑧輪島市3(計測点17)



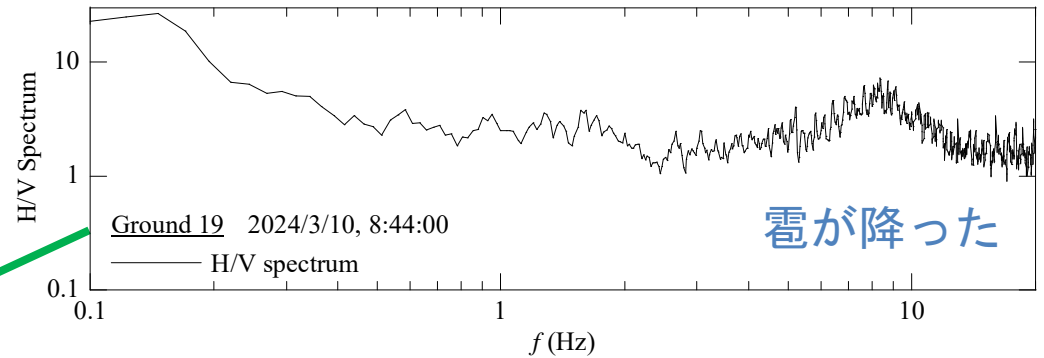


# ⑧輪島市4 (計測点18)



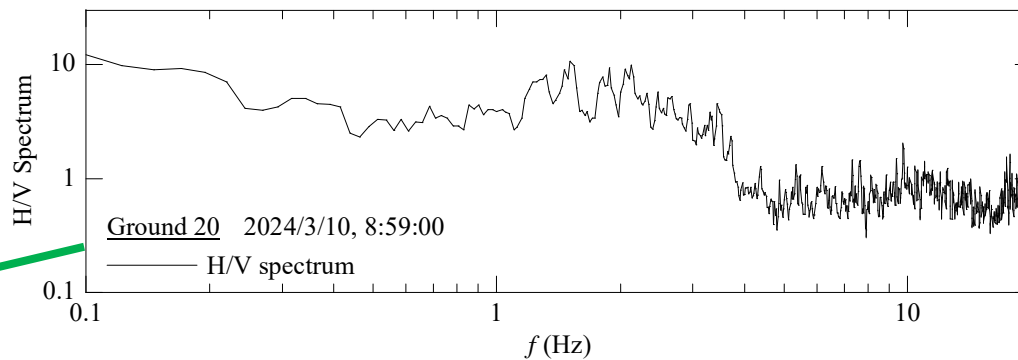
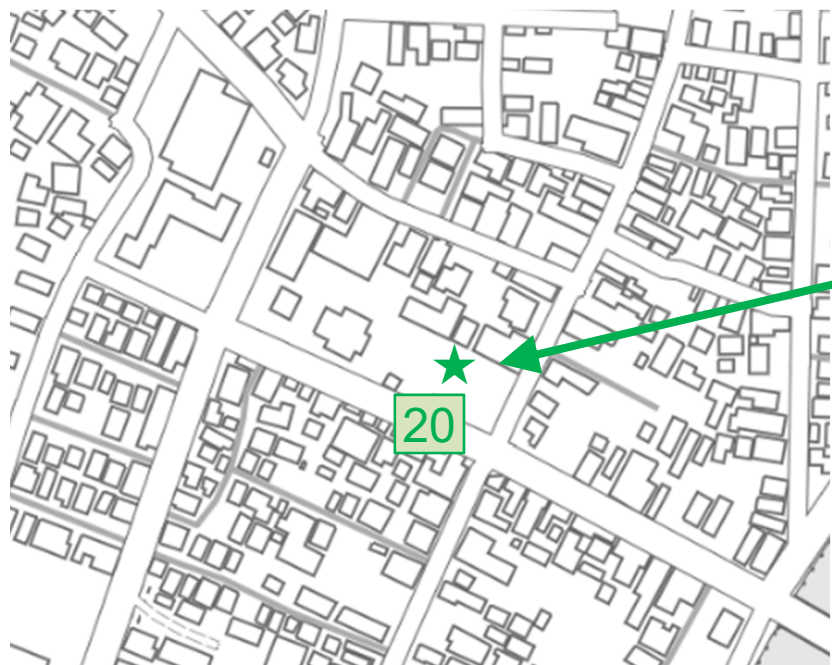


# ⑧輪島市5(計測点19)



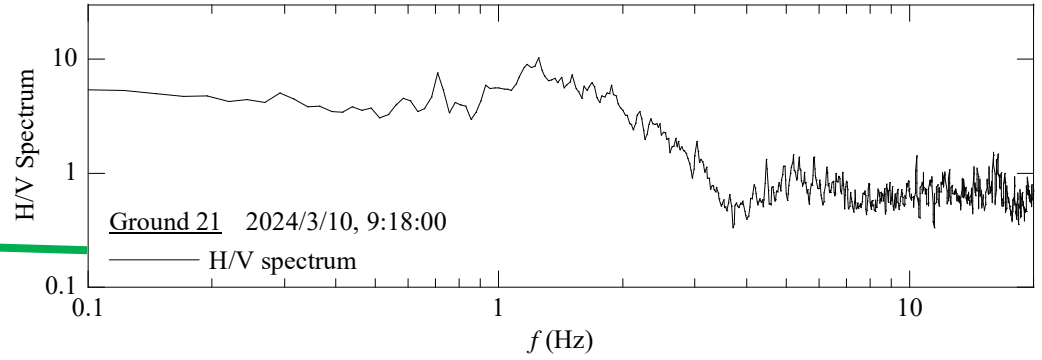
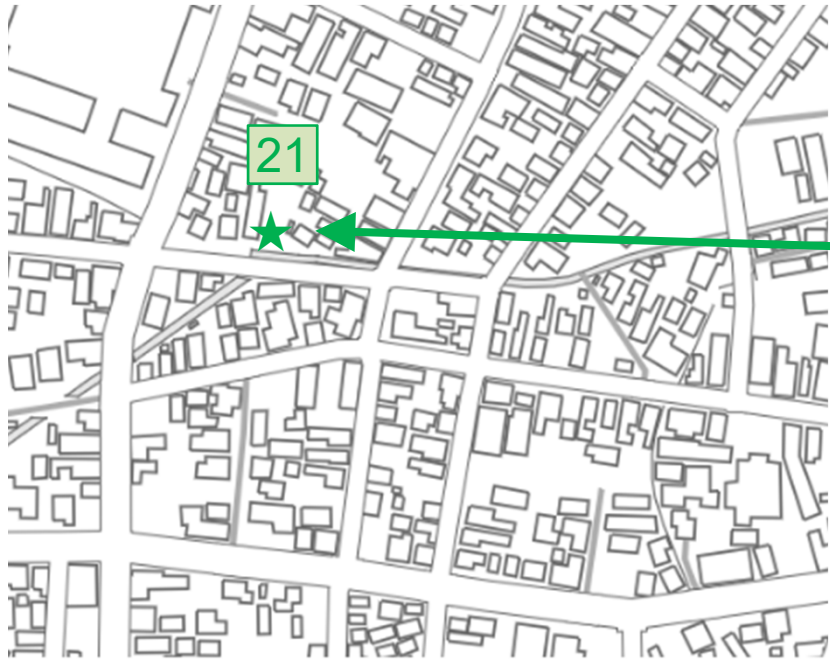


# ⑧輪島市6(計測点20)



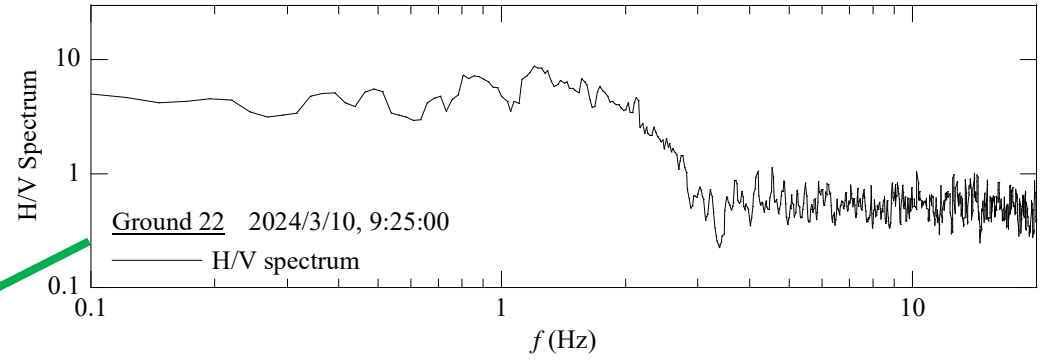
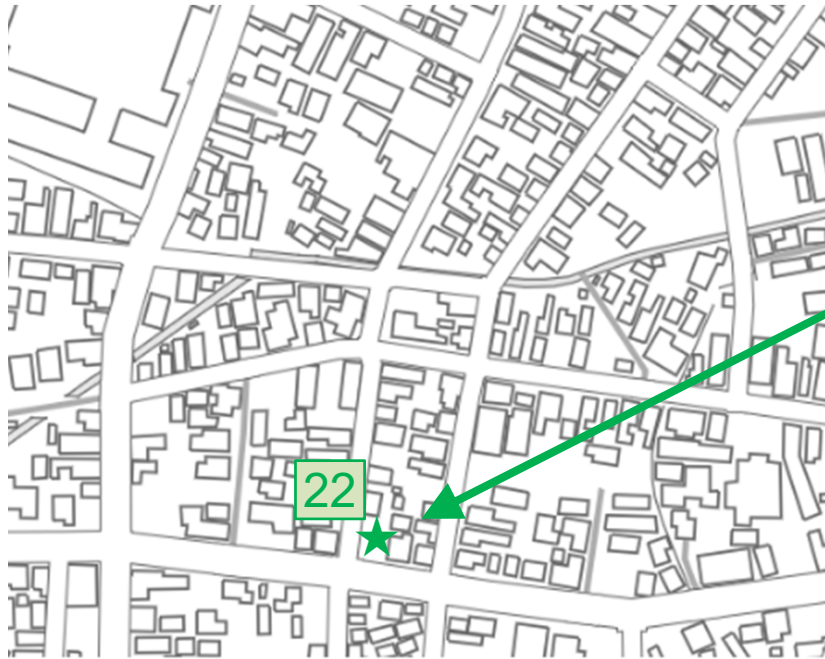


# ⑧輪島市7 (計測点21)



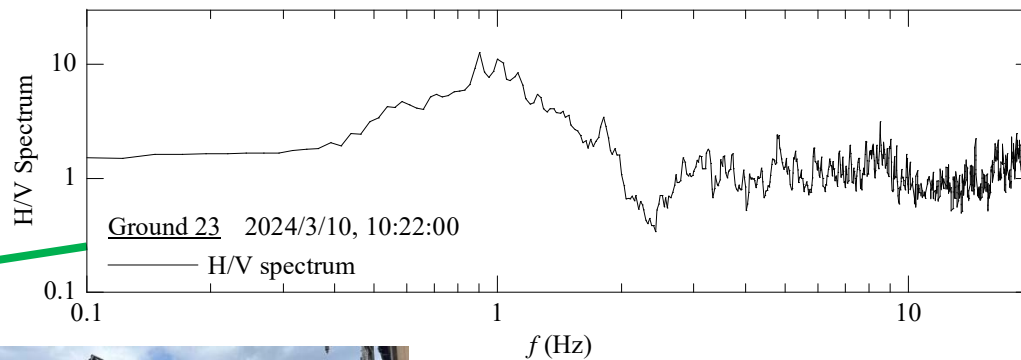


# ⑧輪島市8 (計測点22)





# ⑧輪島市9 (計測点23)

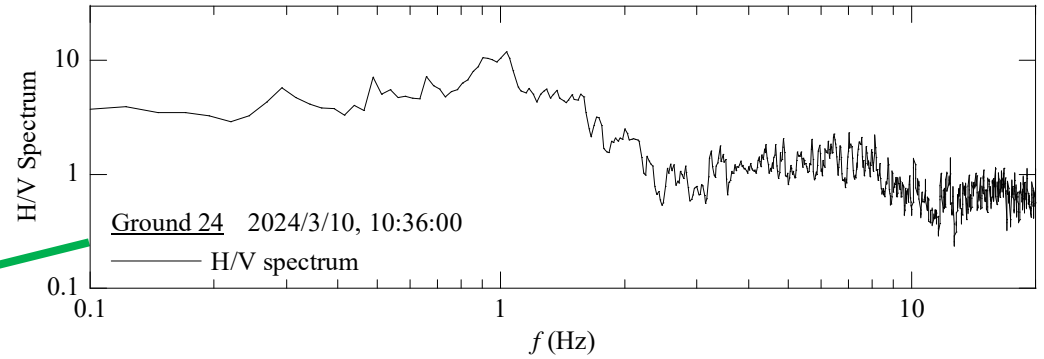
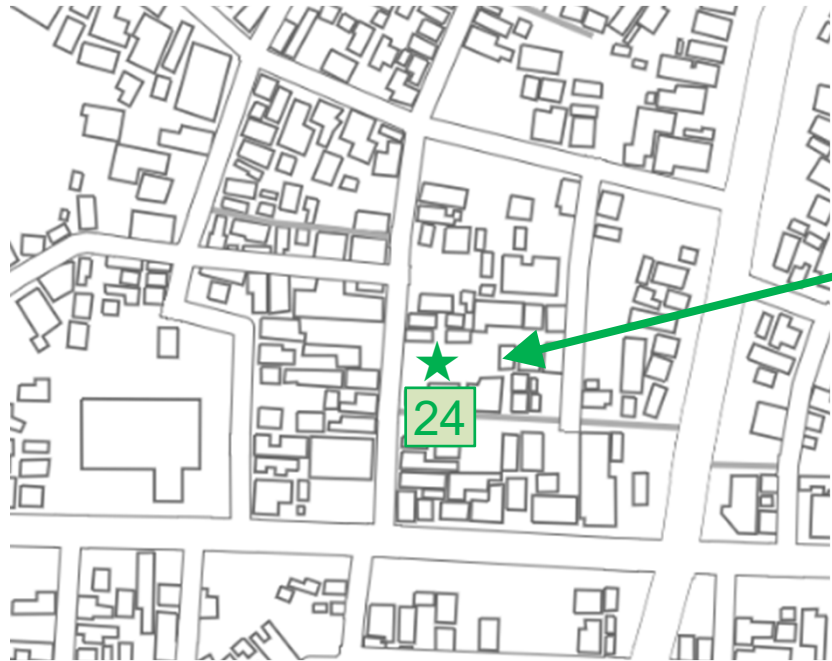


火災跡



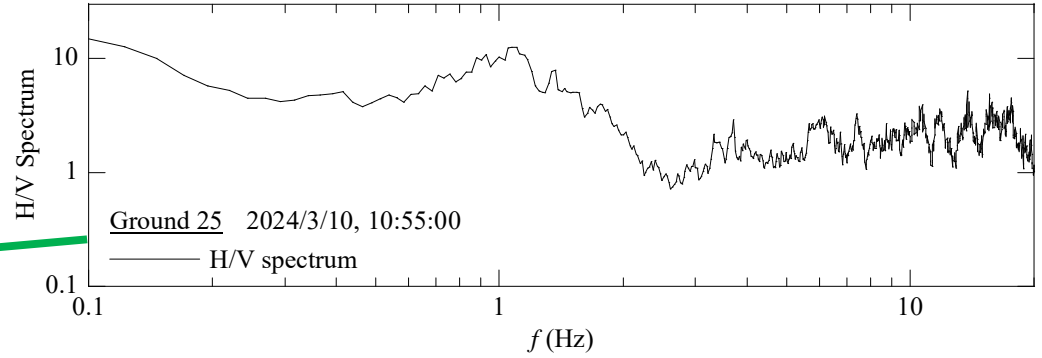
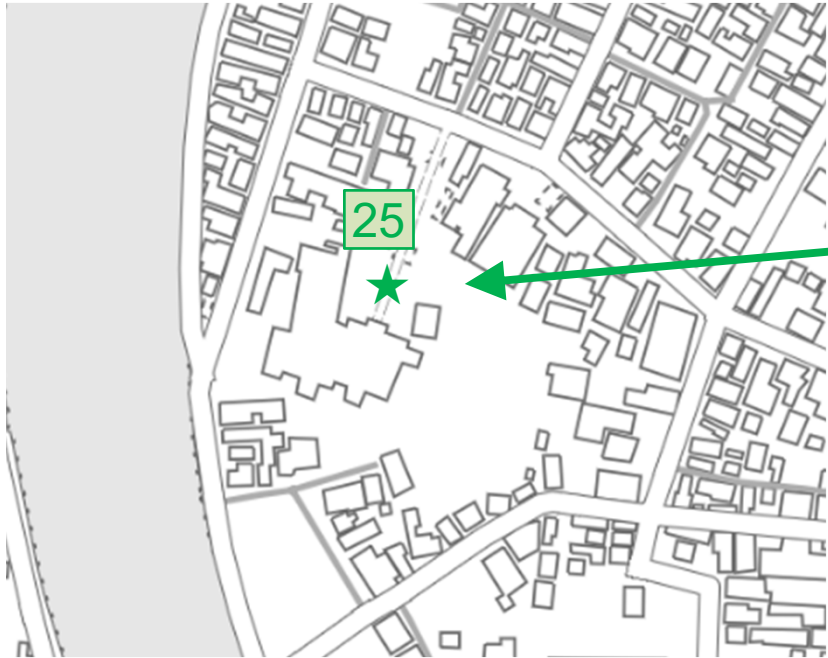


# ⑧輪島市10(計測点24)



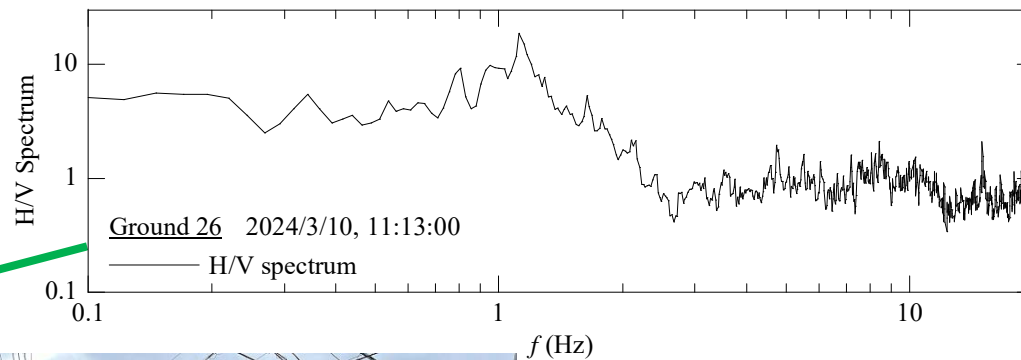
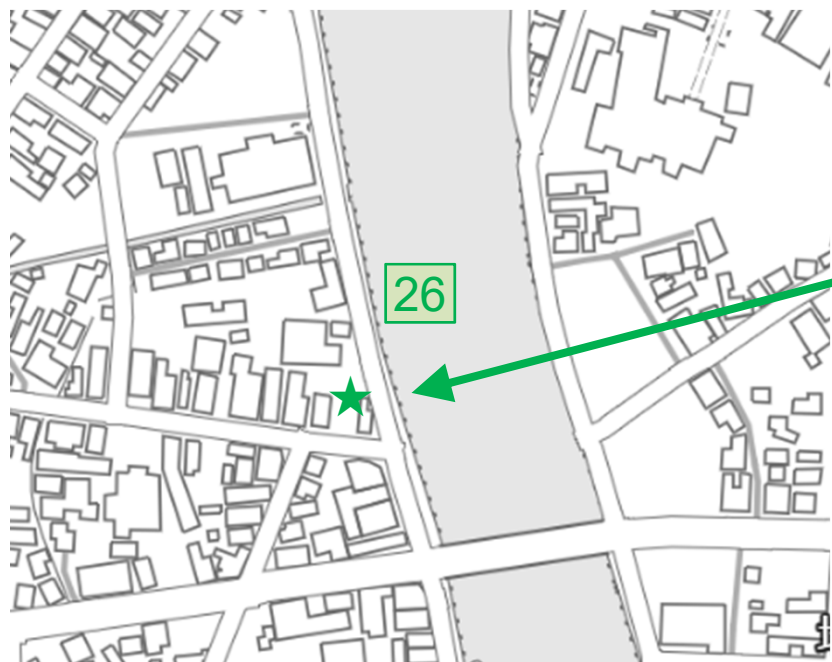


# ⑧輪島市11 (計測点25)



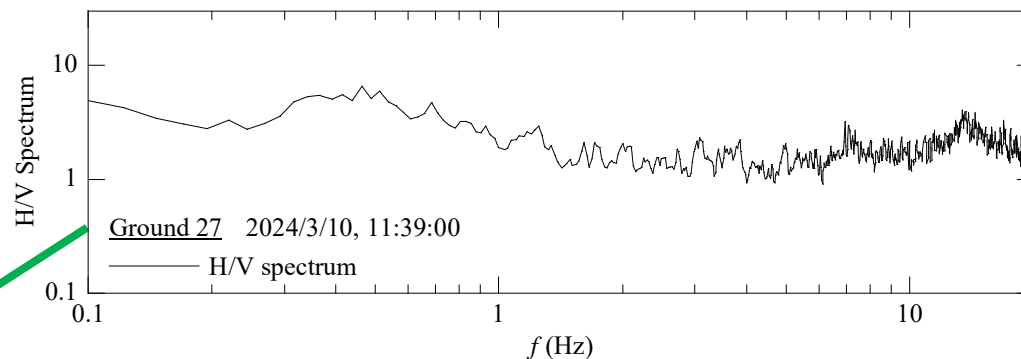


# ⑧輪島市12(計測点26)



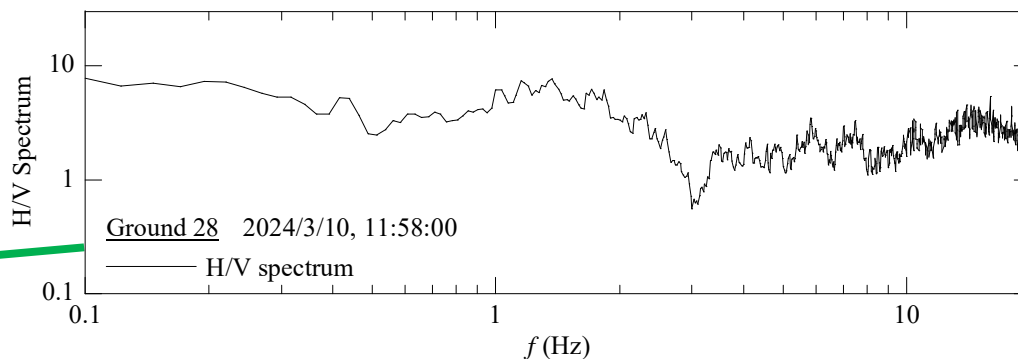


# ⑧輪島市13 (計測点27 / ISK003)





# ⑧輪島市14(計測点28)



地盤変状



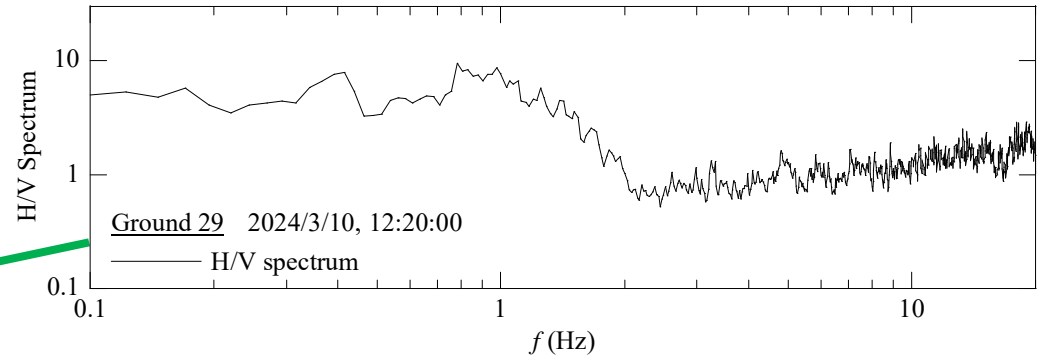
地盤変状



地盤変状

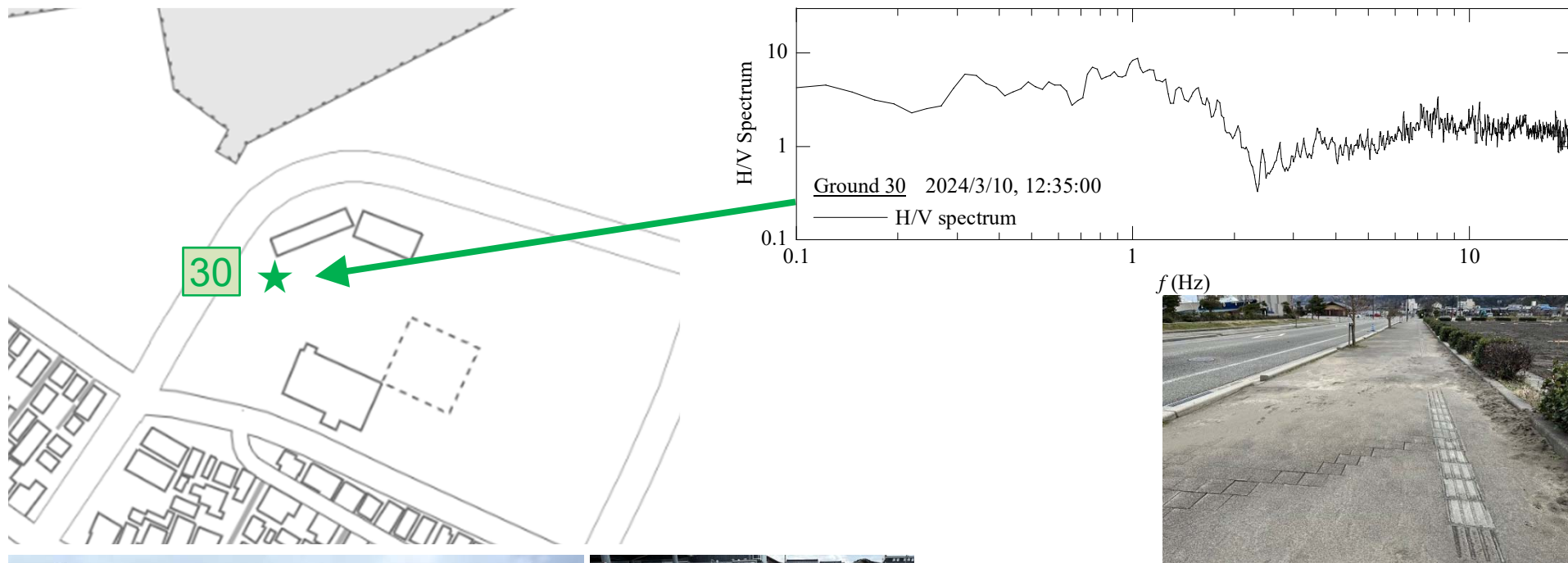


# ⑧輪島市15(計測点29)



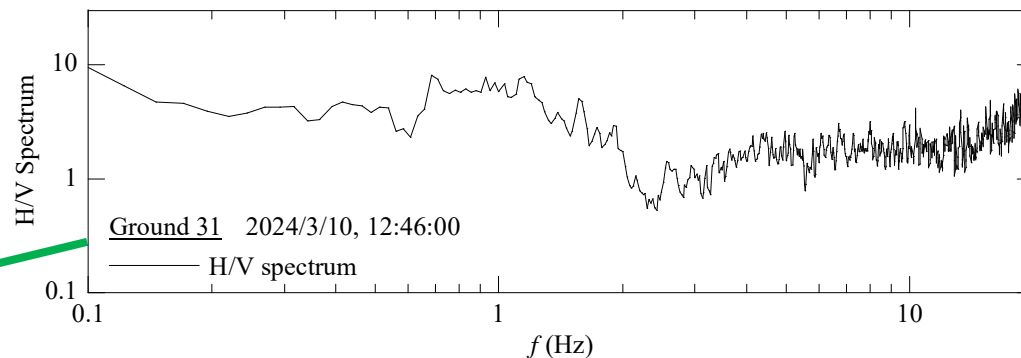
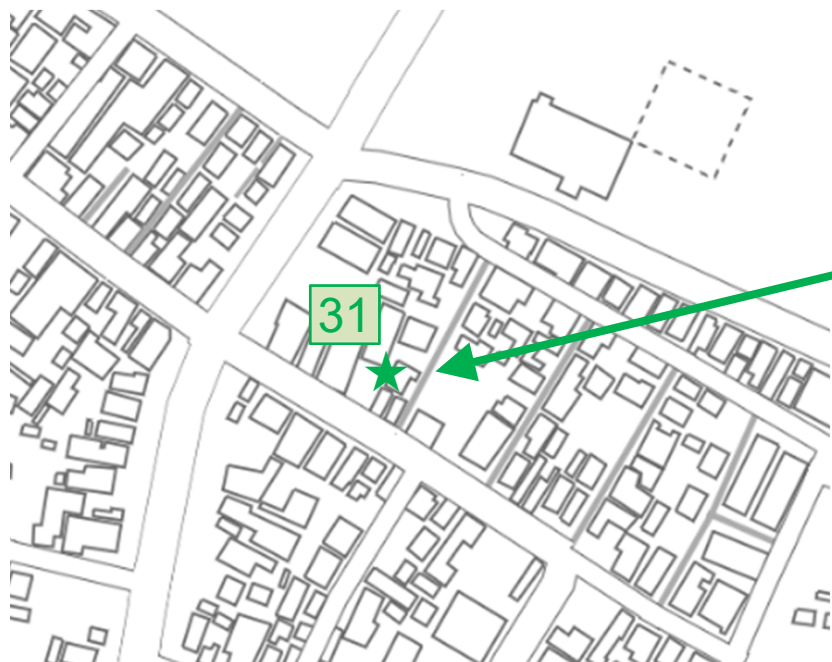


# ⑧輪島市16 (計測点30)



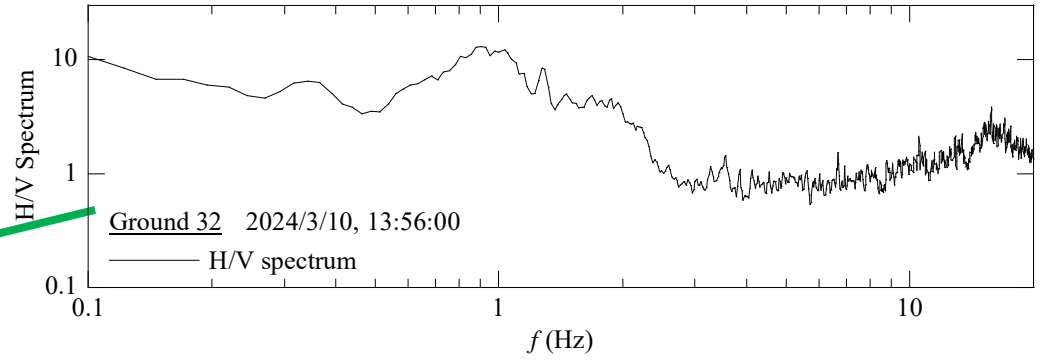
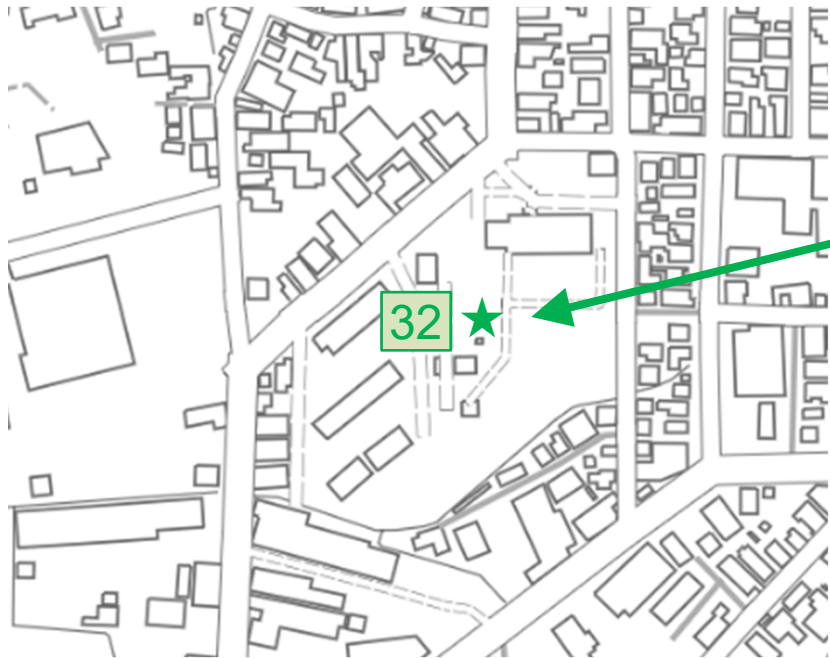


# ⑧輪島市17 (計測点31)



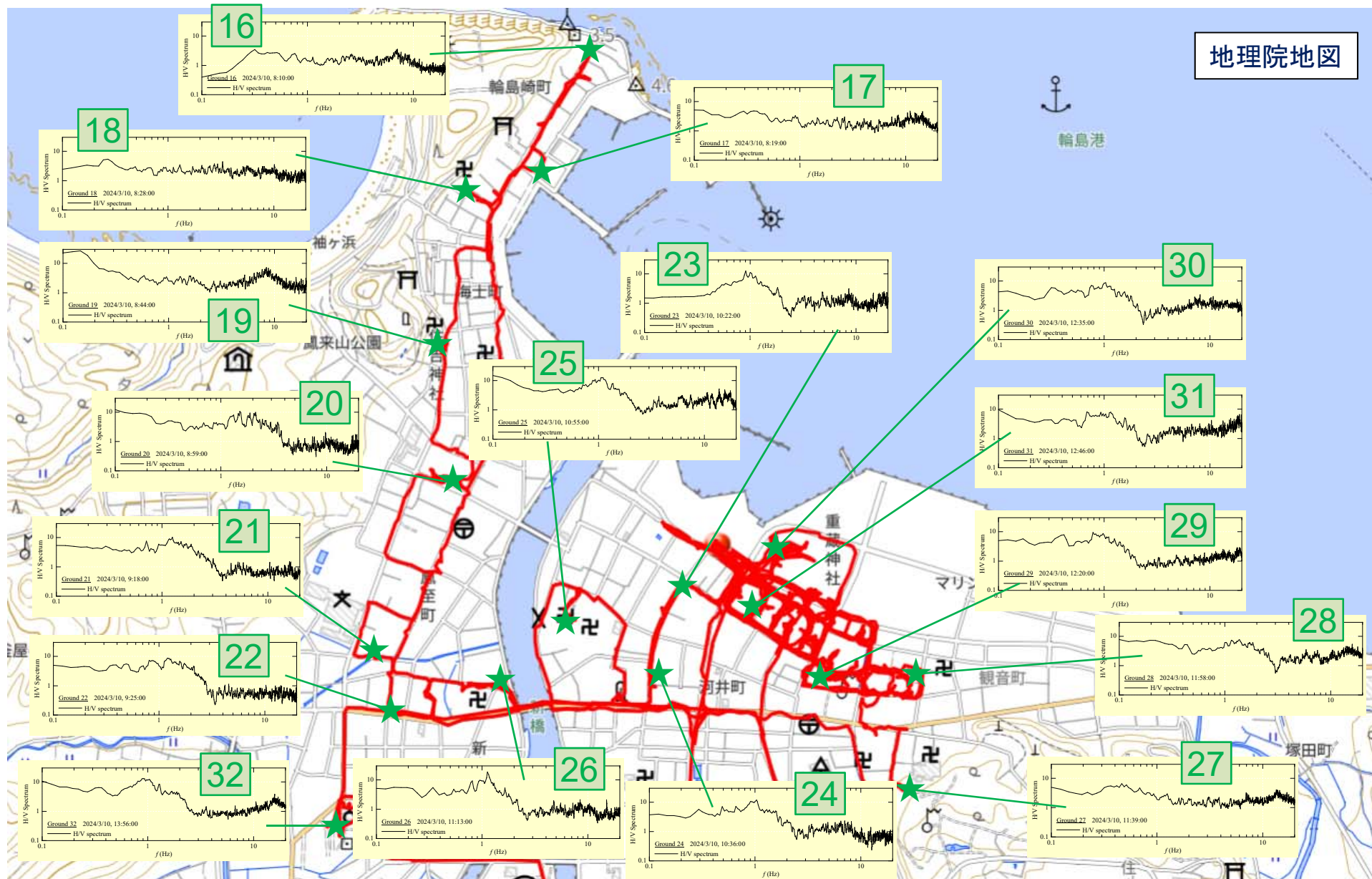


# ⑧輪島市18 (計測点32 / JMA輪島)



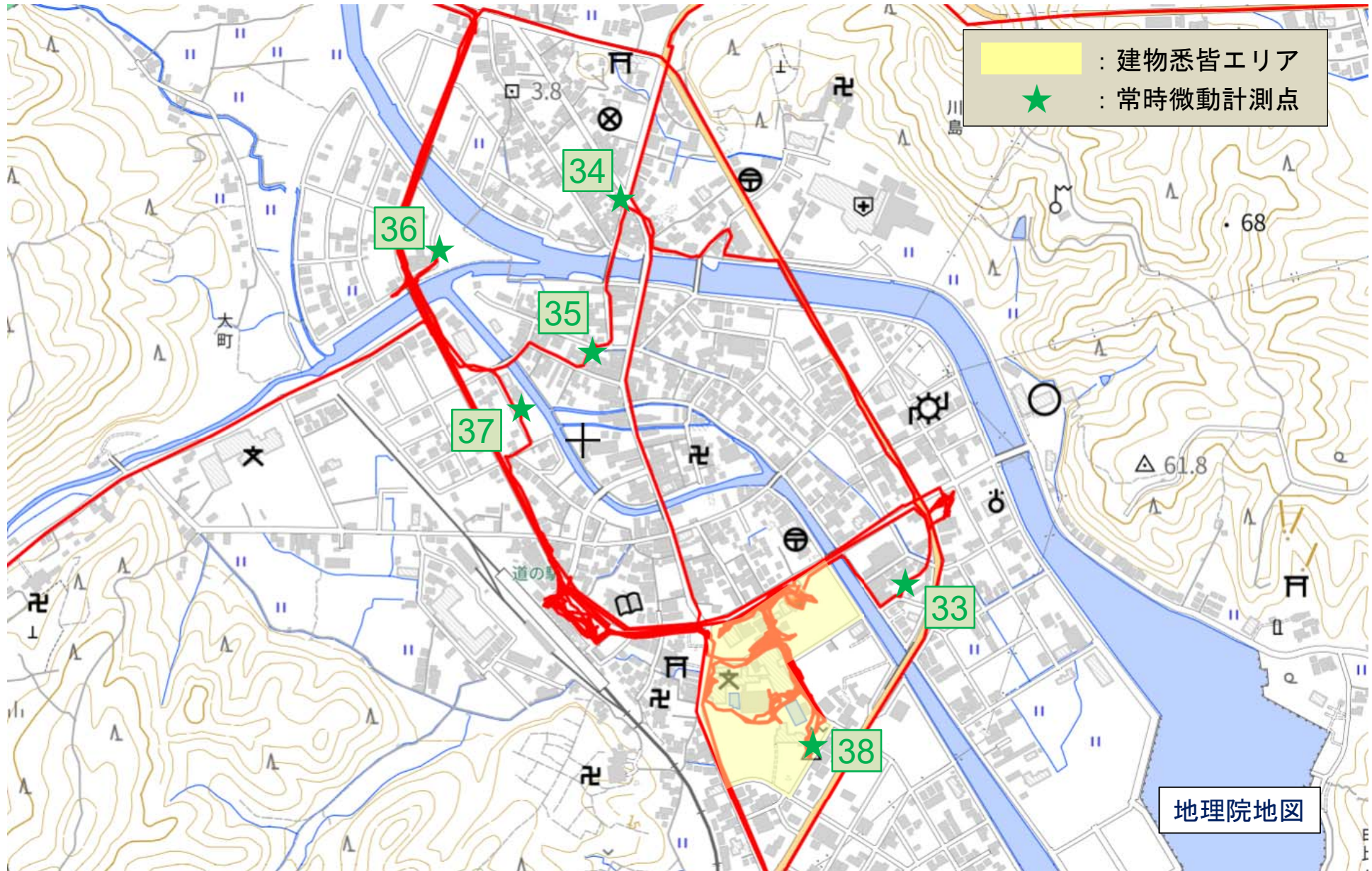


# ⑧輪島市19 (H/Vスペクトルまとめ)



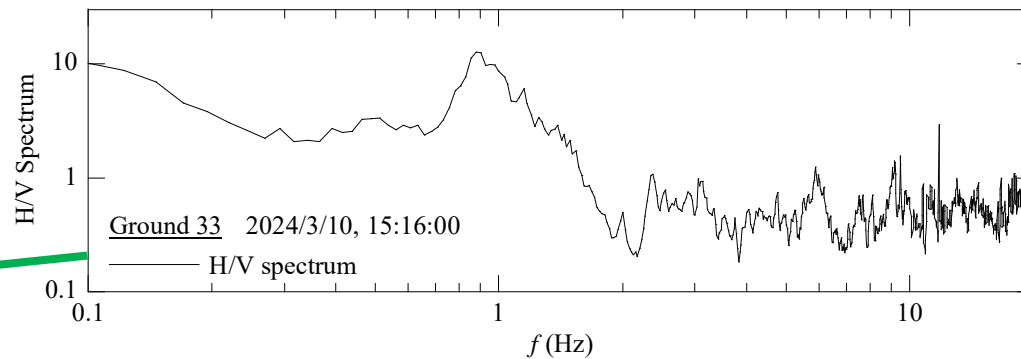


# ⑨穴水市1 (調査範囲)



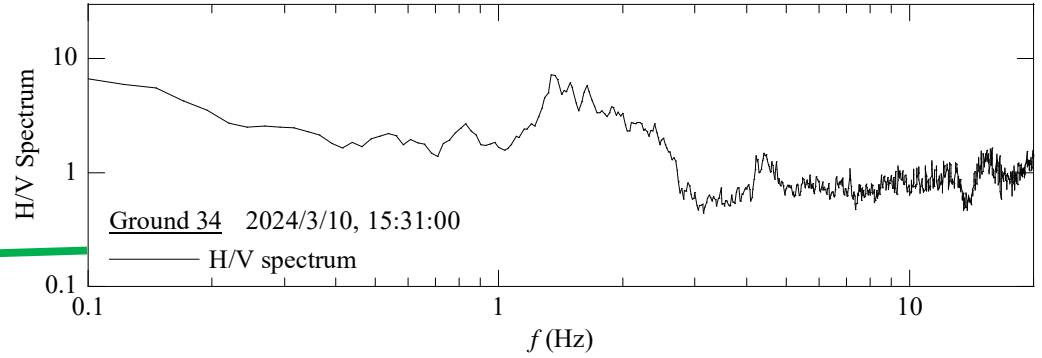
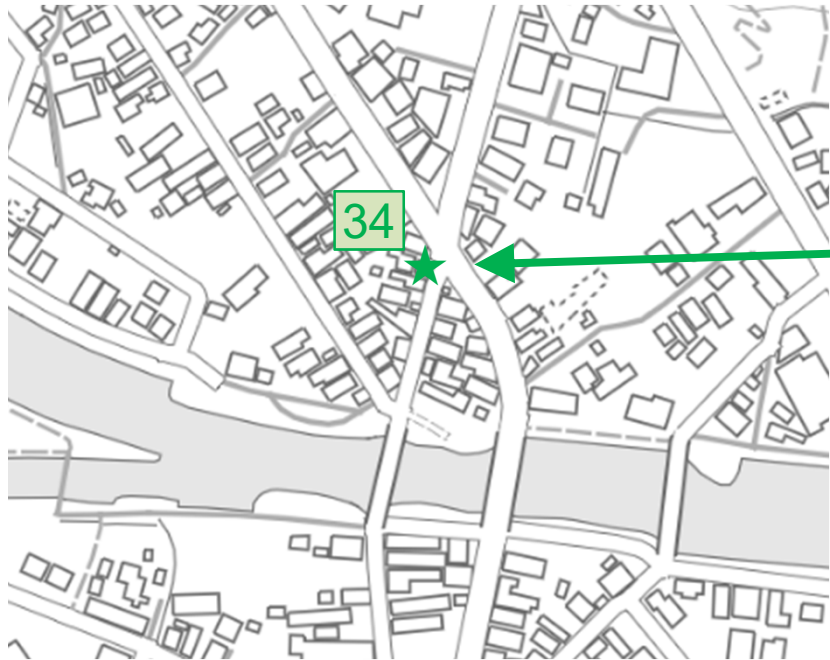


# ⑨穴水市2(計測点33)



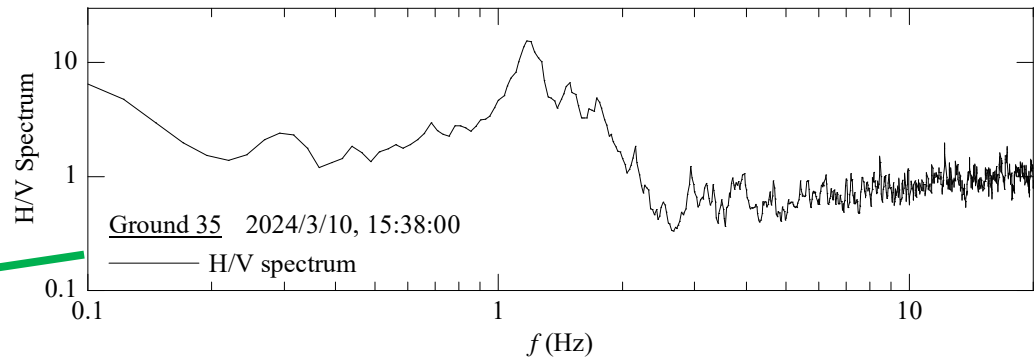
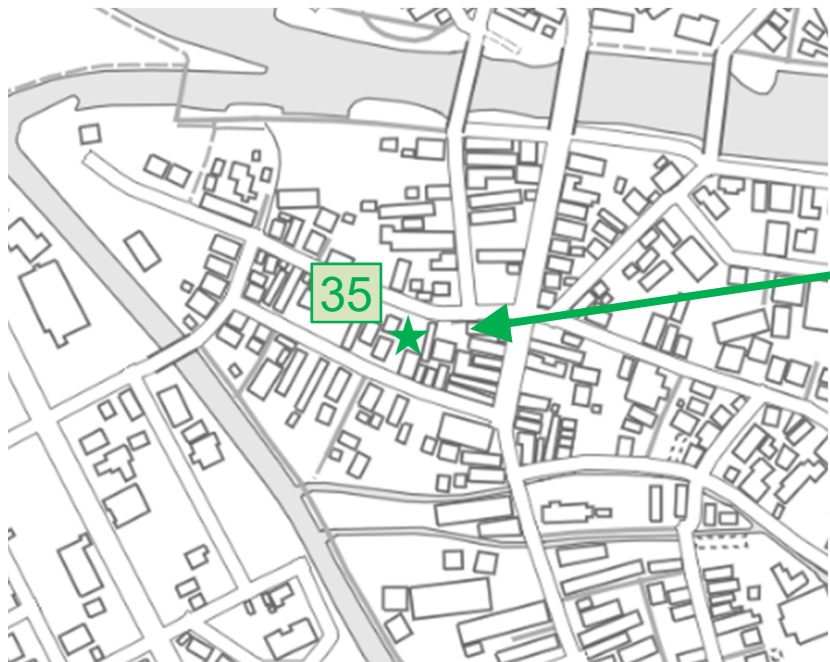


# ⑨穴水市3 (計測点34)



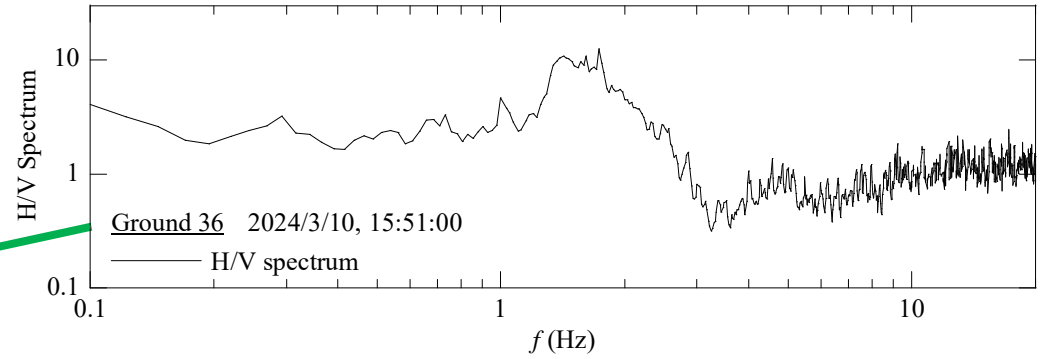
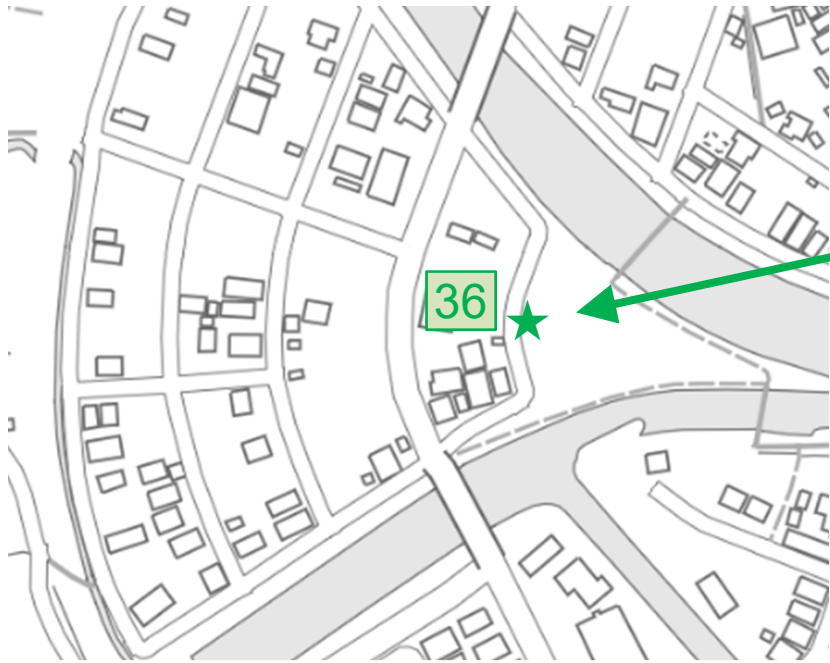


# ⑨穴水市4 (計測点35)



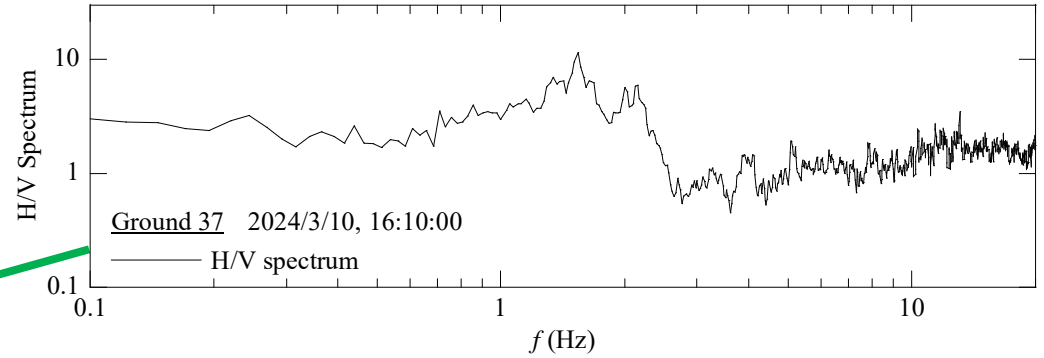
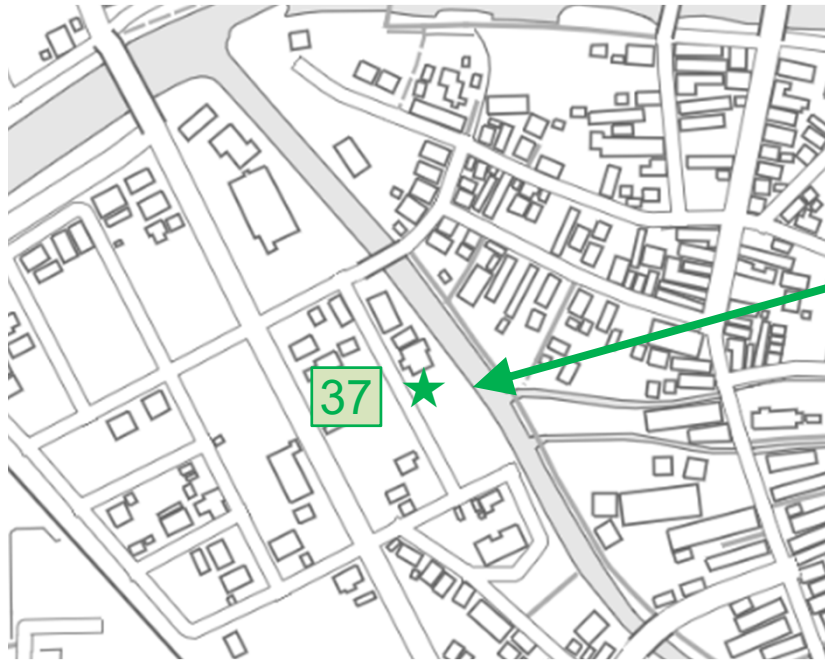


# ⑨穴水市5 (計測点36)



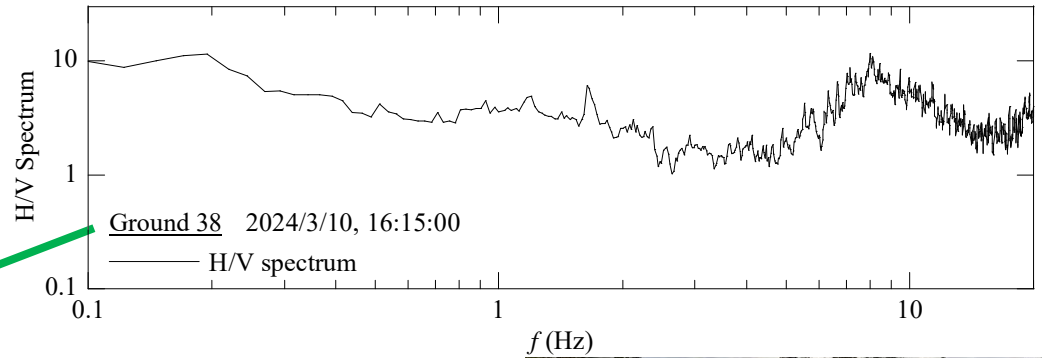
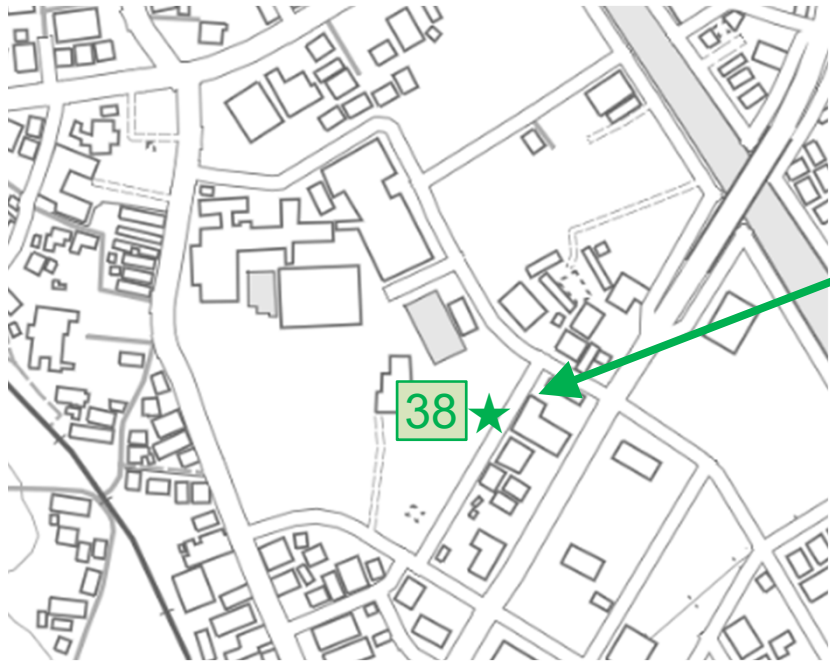


# ⑨穴水市6 (計測点37 / ISK005)





# ⑨穴水市7 (計測点38 / ISK015)





# ⑨穴水市8 (H/Vスペクトルまとめ)

